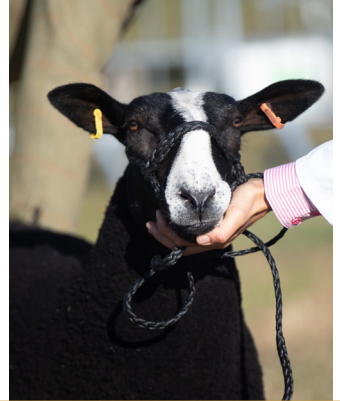
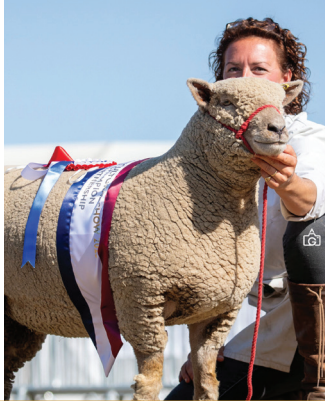


EDENBRIDGE & OXTED

AGRICULTURAL SHOW

Celebrating the country way of life since 1837



Sunday 30th & Monday 31st August 2026

Sheep Section

Schedule of entry

Entries close 24th July 2026

Please see our website for other show schedules and enter
online at: www.edenbridge-show.co.uk

CPH: 40/129/8000

Edenbridge & Oxted Show Office, The Old Dairy, Wintersell Farm,
Dwelly Lane, Edenbridge, Kent TN8 6QD

T: 01342 832307

E: info@edenbridge-show.co.uk

Registered charity no. 1102127

Company limited by guarantee - incorporation no. 4682208



Judging will commence from 8.30am, with a full timetable available from the Chief Sheep Steward on Saturday 29th August.

Show Members receive a discount on class entry fees. Membership for 2026 begins at just £66 and can be bought online with your entries.

Camping passes are available for purchase for **exhibitors only** online at £20 each for the first pass, with a maximum of two further passes at £30 each.

Camping space is limited and is offered to help ensure you can be on site to care for your livestock. Camping passes booked must be proportionate to your overall booking.

Anyone bringing a tent, caravan or motorhome will need a camping pass.

Schools & Young Farmers - please contact us **before** booking camping as discounted rates will apply.



We allocate adult passes which are valid for Showground entry from Saturday to Monday. Buy extra livestock wristbands online if required when you submit entries. Children under 16 in your party will be given a free wristband on arrival. Additional wristbands are £40 each.

PASS ALLOCATION:

Pedigree sheep entered
1 to 4 = 2 passes
5 or 6 = 3 passes
7 + = 4 passes

Commercial class entries -
2 passes if no pedigree sheep are
also entered
Fleece entries - no passes

Volunteer Agriculture Committee

Rhys Grenham (Joint Chairman), Jo Masters (Joint Chairman & Chief Sheep Steward)
Chloe Wood (Vice Chairman)

Laurence Angus
Mike Deakins
Rachel Fox
Oliver Giles
David Heasman
Brenda Hide

Melanie Isted
Edward Kingshott
Donald Masters
Claire Maydon
Alex Moss
Maria Naylor

Richard Pemble
Ruth Perry
Bill Peters
Kevin Reed
Sam Turner
David Wood

John Downing (Joint Show Chairman)
Holly Taylor (Joint Show Chairman)
Jo Masters (Joint Show Vice Chairman)
Alastair Roberts (Joint Show Vice Chairman)

Helen Mahy CBE (Show President)
Linda Charlton (Honorary Treasurer)
Judy Whittaker (Show Director)

LIVESTOCK GATE OPENING HOURS

SATURDAY 8am - 6pm

All livestock must arrive at the Showground during this time and must remain until the show closes on Monday at around 5pm. This time is approximate and subject to the Event H&S Officer permitting the opening of gates.



REMEMBER TO BOOK YOUR PENS!

Each sheep pen is £6 - you must book and pay for all the pens you need at the time of making your entry. This includes kit pens and pens for commercial classes.

Pens are limited to a max of 4 per exhibitor per breed.

Pens and camping passes are items for purchase in the 'Competing' area of our website.

Visit www.edenbridge-show.co.uk to see the class listings and make your entry. Don't forget to include a membership if you want great discounts on class fees and an additional pass.

All Breeds Show Team Award - Sheep

Judged in the sheep lines. Judging criteria covers such aspects as presentation and welfare of sheep, cleanliness of line, marketing and promotion of flock and public educational value.

Prizes: 1st - £50, 2nd - £25, 3rd - £15, 4th - £10

Judge: Mrs Tory Lugsden, Suffolk

PLEASE NOTE: All sheep shown in our pedigree breed classes must be registered with the relevant breed society.

Any Other Continental Breed

Judge: Matt Smith, Devon
Sunday 30th August 2026

Entry fee: Members £5, Non-Members £12

Prize money: 1st £20, 2nd £15, 3rd £10

This section is kindly sponsored by Fresh Flock Mobile Sheep Dipping

- Class S1: Ram, shearling or older
- Class S2: Ram Lamb
- Class S3: Shearling Ewe
- Class S4: Ewe Lamb
- Class S5: Best Matching Pair
Any age or sex. Animals must have been entered into previous breed classes in this section and be exhibitor-owned.
- Class S6: Group of Three
One animal must be the opposite sex to the other two.
Animals must have been entered into previous breed classes in this section and be exhibitor-owned.
- Class S7: *Any Other Continental Breed Championship***
1st and 2nd placed prize winners of classes S1 - S4 will be eligible to enter this championship.
Prizes: £20 champion, £10 Reserve Champion

Any Other Native Longwool Breed

Judge: Bryan Coventry, Berkshire
Sunday 30th August 2026

Entry fee: Members £5, Non-Members £12
Prize money: 1st £20, 2nd £15, 3rd £10

- Class S10: Ram, shearling or older
- Class S11: Ram Lamb
- Class S12: Shearling Ewe
- Class S13: Ewe Lamb
- Class S14: Best Matching Pair
Any age or sex. Animals must have been entered into previous breed classes in this section and be exhibitor-owned.
- Class S15: Group of Three
One animal must be the opposite sex to the other two.
Animals must have been entered into previous breed classes in this section and be exhibitor-owned.
- Class S16: Any Other Native Longwool Breed Championship**
1st and 2nd placed prize winners of classes S10 - S13 will be eligible to enter this championship.
Prizes: £20 champion, £10 Reserve Champion

07825 299339

With our custom built mobile dip tank we can come to you. We are fully licensed and insured and cover the southeast of England.

We only use the best products that protect against:

Scab, Blowfly, Lice, Ticks, Keds



Any Other Native Short Wool Breed

Judge: Vicky Smith, Devon
Sunday 30th August 2026

Entry fee: Members £5, Non-Members £12
Prize money: 1st £20, 2nd £15, 3rd £10

- Class S19: Ram, shearling or older
- Class S20: Ram Lamb
- Class S21: Shearling Ewe
- Class S22: Ewe Lamb
- Class S23: Best Matching Pair
Any age or sex. Animals must have been entered into previous breed classes in this section and be exhibitor-owned.
- Class S24: Group of Three
One animal must be the opposite sex to the other two.
Animals must have been entered into previous breed classes in this section and be exhibitor-owned.
- Class S25: *Any Other Native Short Wool Breed Championship***
1st and 2nd placed prize winners of classes S19 - S22 will be eligible to enter this championship.
Prizes: £20 champion, £10 Reserve Champion

LONG SERVICE AWARDS - Make a nomination!

Open to agricultural, horticultural, forestry workers and grooms

Long service awards will be presented to the three longest serving employees who have completed a minimum of thirty years' service without intermission on the same farm or estate or under the same employer.

Details giving dates of service and full names of employees, signed by the employer, should be sent to the Show Office no later than 31st July 2026.

The Employer should be a member of the Society.

Application forms available from: Edenbridge & Oxted Agricultural Show - call 01342 832307 or email info@edenbridge-show.co.uk

Badger Face Welsh Mountain - Torddu & Torwen

Judge: Bryan Coventry, Berkshire
Sunday 30th August 2026

Entry fee: Members £5, Non-Members £12

Prize money: 1st £20, 2nd £15, 3rd £10

This section is kindly sponsored by J S Services

- Class S28: Ram, shearling or older
- Class S29: Ram Lamb
- Class S30: Shearling Ewe
- Class S31: Ewe Lamb
- Class S32: Best Matching Pair
Any age or sex. Animals must have been entered into previous breed classes in this section and be exhibitor-owned.
- Class S33: Group of Three
One animal to be the opposite sex of the other two.
Animals must have been entered into previous breed classes in this section and be exhibitor-owned.
- Class S34: *Badger Face Welsh Mountain - Torddu & Torwen Championship***
1st and 2nd prize winners of classes S28 - S31 will be eligible to enter this championship.
Prizes: £20 champion, £10 Reserve Champion

The Holland Cup, donated and presented by the Holland family, will be awarded to the Badger Face Welsh Mountain Sheep Champion.

The Otterden Flock Perpetual Trophy, donated and presented by Mrs G Gribble, will be awarded to the Best Torwen exhibit.

All exhibitors are required to hold appropriate public liability insurance for their livestock and to produce evidence of this on request.

Beltex

Judge: Kirsty Howieson, Somerset
Sunday 30th August 2026

Entry fee: Members £5, Non-Members £12

Prize money: 1st £20, 2nd £15, 3rd £10

This section is kindly sponsored by Harry Hawkins & Partners

- Class S37: Ram, shearling or older
- Class S38: Ram Lamb
- Class S39: Shearling Ewe
- Class S40: Ewe Lamb
- Class S41: Best Matching Pair
Any age or sex. Animals must have been entered into previous breed classes in this section and be exhibitor-owned.
- Class S42: Group of Three
One animal must be the opposite sex to the other two.
Animals must have been entered into previous breed classes in this section and be exhibitor-owned.
- Class S43: Beltex Championship**
1st and 2nd placed prize winners of classes S37 - S40 will be eligible to enter this championship.
Prizes: £20 champion, £10 Reserve Champion

REMEMBER TO BOOK YOUR PENS!

Each sheep pen is £6 - you must book and pay for all the pens you need at the time of making your entry. This includes kit pens. Please be careful to buy the correct type of pen - for MV, non-MV or Commercial classes. Pens are limited to 4 per exhibitor per breed.

Pens, camping passes and extra wristbands are all items for purchase in the 'Shop' area of our website.

Blue Texel

Judge: Matt Smith, Devon
Sunday 30th August 2026

Entry fee: Members £5, Non-Members £12
Prize money: 1st £20, 2nd £15, 3rd £10

- Class S46: Ram, shearling or older
- Class S47: Ram Lamb
- Class S48: Shearling Ewe
- Class S49: Ewe Lamb
- Class S50: Best Matching Pair
Any age or sex. Animals must have been entered into previous breed classes in this section and be exhibitor-owned.
- Class S51: Group of Three
One animal must be the opposite sex to the other two.
Animals must have been entered into previous breed classes in this section and be exhibitor-owned.
- Class S52: Blue Texel Championship**
1st and 2nd placed prize winners of classes S46 - S49 will be eligible to enter this championship.
Prizes: £20 champion, £10 Reserve Champion



Just visit www.edenbridge-show.co.uk to see the class listings and make your entry. Don't forget to buy your membership first to qualify for the discounted class fees.

British Down Breeds

Judge: Vicky Smith, Devon
Sunday 30th August 2026

Entry fee: Members £5, Non-Members £12

Prize money: 1st £20, 2nd £15, 3rd £10

This section is kindly sponsored by Strutt & Parker

The following breeds will be eligible to enter this section: Clun Forest, Dorset Down, Dorset Poll, Dorset Horn, Oxford Down, Ryeland (Standard), Shropshire, Suffolk, Wiltshire Horn.

Class S55: Ram, shearling or older

Class S56: Ram Lamb

Class S57: Shearling Ewe

Class S58: Ewe Lamb

Class S59: Best Matching Pair

Any age or sex. Animals must have been entered into previous breed classes in this section and be exhibitor-owned.

Class S60: Group of Three

One animal must be the opposite sex to the other two.
Animals must have been entered into previous breed classes in this section and be exhibitor-owned.

Class S61: British Down Breeds Championship

1st and 2nd placed prize winners of classes S55 - S58 will be eligible to enter this championship.

Prizes: £20 champion, £10 Reserve Champion

REMEMBER TO BOOK YOUR PENS!

Each sheep pen is £6 - you must book and pay for all the pens you need at the time of making your entry. This includes kit pens. Please be careful to buy the correct type of pen - for MV, non-MV or Commercial classes. Pens are limited to 4 per exhibitor per breed.

Coloured Down

Judge: Sue Anstie, Berkshire
Sunday 30th August 2026

Entry fee: Members £5, Non-Members £12

Prize money: 1st £20, 2nd £15, 3rd £10

This section is kindly sponsored by Sue Anstie

- Class S64: Ram, shearling or older
- Class S65: Ram Lamb
- Class S66: Shearling Ewe
- Class S67: Ewe Lamb
- Class S68: Best Matching Pair
Any age or sex. Animals must have been entered into previous breed classes in this section and be exhibitor-owned.
- Class S69: Group of Three
One animal must be the opposite sex to the other two.
Animals must have been entered into previous breed classes in this section and be exhibitor-owned.
- Class S70: Coloured Down Championship**
1st and 2nd placed prize winners of classes S64 - S67 will be eligible to enter this championship.
Prizes: £20 champion, £10 Reserve Champion



Keep up with our news and join the conversation on our social media feeds. Search @EdenbridgeOxtedShow

Coloured Ryeland

Judge: John Mercer, County Down
Sunday 30th August 2026

Entry fee: Members £5, Non-Members £12

Prize money: 1st £20, 2nd £15, 3rd £10

This section is kindly sponsored by Heygates

Please note, standard Ryeland sheep are not permitted as entries in these classes but should be exhibited in classes S55-S60 instead.

Class S73: Ram, shearling or older

Class S74: Ram Lamb

Class S75: Shearling Ewe

Class S76: Ewe Lamb

Class S77: Best Matching Pair

Any age or sex. Animals must have been entered into previous breed classes in this section and be exhibitor-owned.

Class S78: Group of Three

One animal must be the opposite sex to the other two.
Animals must have been entered into previous breed classes in this section and be exhibitor-owned.

Class S79: Coloured Ryeland Championship

1st and 2nd placed prize winners of classes S73 - S76 will be eligible to enter this championship.

Prizes: £20 champion, £10 Reserve Champion

*Don't miss our new Wool on the Hoof
sweepstake classes!*

See page 23 for more information

Hampshire Down

Judge: John Mercer, County Down
Sunday 30th August 2026

Entry fee: Members £5, Non-Members £12
Prize money: 1st £20, 2nd £15, 3rd £10

This section is kindly sponsored by Agri-Lloyd

- Class S82: Ram, shearling or older
- Class S83: Ram Lamb
- Class S84: Shearling Ewe
- Class S85: Ewe Lamb
- Class S86: Best Matching Pair
Any age or sex. Animals must have been entered into previous breed classes in this section and be exhibitor-owned.
- Class S87: Group of Three
One animal must be the opposite sex to the other two.
Animals must have been entered into previous breed classes in this section and be exhibitor-owned.
- Class S88: *Hampshire Down Championship***
1st and 2nd placed prize winners of classes S82 - S85 will be eligible to enter this championship.
The winner of this championship is awarded the Whittersham Manor trophy (T155)
Prizes: £20 champion, £10 Reserve Champion

All exhibitors are required to hold appropriate public liability insurance for their livestock and to produce evidence of this on request.

Jacob

Judge: Kay Carpenter, Worcestershire
Sunday 30th August 2026

Entry fee: Members £5, Non-Members £12
Prize money: 1st £20, 2nd £15, 3rd £10

This section is kindly sponsored by Gorringe Plant

- Class S91: Ram, shearling or older
- Class S92: Ram Lamb
- Class S93: Shearling Ewe
- Class S94: Ewe Lamb
- Class S95: Best Matching Pair
Any age or sex. Animals must have been entered into previous breed classes in this section and be exhibitor-owned.
- Class S96: Group of Three
One animal must be the opposite sex to the other two.
Animals must have been entered into previous breed classes in this section and be exhibitor-owned.
- Class S97: Jacob Championship**
1st and 2nd placed prize winners of classes S91 - S94 will be eligible to enter this championship.
Prizes: £20 champion, £10 Reserve Champion

The Shutcombe Flock Trophy, donated and presented by the Gorringe family, will be awarded to the Jacob Champion.

LIVESTOCK GATE OPENING HOURS

SATURDAY 8am - 6pm

All livestock must arrive at the Showground during this time and must remain until the show closes on Monday at around 5pm. This time is approximate and subject to the Event H&S Officer permitting the opening of gates.

CAMPING PASSES

For exhibitors with livestock wishing to camp in the Livestock Parking Area in a caravan, tent or motorhome, camping passes can be purchased online from £20.

Kerry Hill

Judge: Rose Bostock, Warwickshire
Sunday 30th August 2026

Entry fee: Members £5, Non-Members £12
Prize money: 1st £20, 2nd £15, 3rd £10

This section is kindly sponsored by Mole Valley Farmers

- Class S100: Ram, shearling or older
- Class S101: Ram Lamb
- Class S102: Shearling Ewe
- Class S103: Ewe Lamb
- Class S104: Best Matching Pair
Any age or sex. Animals must have been entered into previous breed classes in this section and be exhibitor-owned.
- Class S105: Group of Three
One animal must be the opposite sex to the other two.
Animals must have been entered into previous breed classes in this section and be exhibitor-owned.
- Class S106: Kerry Hill Championship**
1st and 2nd placed prize winners of classes S100 - S103 will be eligible to enter this championship.
Prizes: £20 champion, £10 Reserve Champion

Don't forget the paperwork! All sheep will need to be checked in and out of our holding with our stewards.

CPH: 40/129/8000

Lleyn

Judge: Derek Bond, West Sussex
Sunday 30th August 2026

Entry fee: Members £5, Non-Members £12
Prize money: 1st £20, 2nd £15, 3rd £10

- Class S109: Ram, shearling or older
- Class S110: Ram Lamb
- Class S111: Shearling Ewe
- Class S112: Ewe Lamb
- Class S113: Best Matching Pair
Any age or sex. Animals must have been entered into previous breed classes in this section and be exhibitor-owned.
- Class S114: Group of Three
One animal must be the opposite sex to the other two.
Animals must have been entered into previous breed classes in this section and be exhibitor-owned.
- Class S115: Lleyn Championship**
1st and 2nd placed prize winners of classes S109 - S112 will be eligible to enter this championship.
Prizes: £20 champion, £10 Reserve Champion

We allocate adult passes which are valid for Showground entry from Saturday to Monday. Buy extra livestock wristbands online if required when you submit entries. Children under 16 in your party will be given a free wristband on arrival. Additional wristbands are £40 each.

PASS ALLOCATION:

Pedigree sheep entered

1 to 4 = 2 passes

5 or 6 = 3 passes

7 + = 4 passes

Commercial class entries -

2 passes if no pedigree sheep are also entered

Fleece entries - no passes

Southdown

Judge: Stephen Humphrey, West Sussex
Sunday 30th August 2026

Entry fee: Members £5, Non-Members £12
Prize money: 1st £20, 2nd £15, 3rd £10

This section is kindly sponsored by Lambert & Foster

Supplementary rules for Southdown breed exhibitors:

- All animals entered in these classes must be from current members of the Southdown Sheep Society and either be registered or eligible for registration with the Southdown Sheep Society. All animals must be owned by exhibitors for a minimum of four months prior to the show.
- All sheep must be led on a halter in the ring unless instructed otherwise by judge or stewards.
- No more than one handler per sheep will be allowed in the show ring unless authorised by stewards, eg to ensure health and safety
- No sheep which has been artificially coloured or tinted may be shown

Class S118: Ram, shearling or older

Class S119: Ram Lamb

Class S120: Shearling Ewe

Class S121: Ewe Lamb

Class S122: Best Matching Pair

Any age or sex. Animals must have been entered into previous breed classes in this section and be exhibitor-owned.

Class S123: Group of Three

One animal must be the opposite sex to the other two.
Animals must have been entered into previous breed classes in this section and be exhibitor-owned.

Class S124: Southdown Championship

1st and 2nd placed prize winners of classes S118 - S121 will be eligible to enter this championship.

Prizes: £20 champion, £10 Reserve Champion

The Southdown Sheep Society will award a special rosette to the best Southdown Sheep exhibited by a member of the society.

Texel

Judge: Tim Butcher, Kent
Sunday 30th August 2026

Entry fee: Members £5, Non-Members £12

Prize money: 1st £20, 2nd £15, 3rd £10

This section is kindly sponsored by Strutt & Parker

- Class S127: Ram, shearling or older
- Class S128: Ram Lamb
- Class S129: Shearling Ewe
- Class S130: Ewe Lamb
- Class S131: Best Matching Pair
Any age or sex. Animals must have been entered into previous breed classes in this section and be exhibitor-owned.
- Class S132: Group of Three
One animal must be the opposite sex to the other two.
Animals must have been entered into previous breed classes in this section and be exhibitor-owned.
- Class S133: Texel Championship**
1st and 2nd placed prize winners of classes S127 - S130 will be eligible to enter this championship.
Prizes: £20 champion, £10 Reserve Champion

**GRAND PARADE OF LIVESTOCK
Main Ring - 2.30pm on Monday**

*Please support your breed and bring
your sheep on parade!*

Valais Blacknose

Judge: John Shrubsall, Kent
Sunday 30th August 2026

Entry fee: Members £5, Non-Members £12

Prize money: 1st £20, 2nd £15, 3rd £10

- Class S136: Ram, shearling or older
- Class S137: Ram Lamb
- Class S138: Shearling Ewe
- Class S139: Ewe Lamb
- Class S140: Best Matching Pair
Any age or sex. Animals must have been entered into previous breed classes in this section and be exhibitor-owned.
- Class S141: Group of Three
One animal must be the opposite sex to the other two.
Animals must have been entered into previous breed classes in this section and be exhibitor-owned.
- Class S142: Valais Blacknose Championship**
1st and 2nd placed prize winners of classes S136 - S139 will be eligible to enter this championship.
Prizes: £20 champion, £10 Reserve Champion

Zwartbles

Judge: Vincent Davies, Warwickshire
Sunday 30th August 2026

Entry fee: Members £5, Non-Members £12
Prize money: 1st £20, 2nd £15, 3rd £10

This section is kindly sponsored by Cameron Clark

- Class S145: Ram, shearling or older
- Class S146: Ram Lamb
- Class S147: Shearling Ewe
- Class S148: Ewe Lamb
- Class S149: Best Matching Pair
Any age or sex. Animals must have been entered into previous breed classes in this section and be exhibitor-owned.
- Class S150: Group of Three
One animal must be the opposite sex to the other two.
Animals must have been entered into previous breed classes in this section and be exhibitor-owned.
- Class S151: Zwartbles Championship**
1st and 2nd placed prize winners of classes S145 - S148 will be eligible to enter this championship.
Prizes: £20 champion, £10 Reserve Champion

With the exception of Young Handler classes, our prize payouts will be made directly into your bank account. That's why we ask for your bank details when you enter.

SHEEP BREED CHAMPIONSHIPS

These championships are kindly sponsored by BTF Partnership

Judge: Benn Lugsden, Suffolk
Monday 31st August 2026

Judging will commence from 9am

Class S154: Champion Group of Three

The 1st and 2nd placed prize winners from the Group of Three classes held on Sunday in their respective section will be eligible for this championship.

Prizes: 1st - £50, 2nd - £25

The Champion Group of Three will be presented with the Masters Challenge Trophy (T153)

Class S155: Champion Pair

The 1st and 2nd placed prize winners from the Best Matching Pair classes held on the Sunday in their respective section will be eligible for this championship.

Prizes: 1st - £50, 2nd - £25

The Champion Pair will be presented with the Wakeham Dawson and Harmer Challenge Trophy (T152)

Class S156: Supreme Sheep Championship

The Champion and Reserve Champion prize winners from the classes held on the Sunday in their respective section will be eligible for this championship. Commercial Sheep are not eligible.

Prizes: 1st - £100, 2nd - £50

The Supreme Champion Sheep will be presented with the Roger Lugg Challenge Cup (T117)

COMMERCIAL BREEDING

Judge: Richard Davies, Northamptonshire
Sunday 30th August 2026

Entry fee: Members £5, Non-Members £12
Prize money: 1st £20, 2nd £15, 3rd £10

This section is kindly sponsored by Hobbs Parker

All commercial sheep to be shown untrimmed, only with necessary dagging. These classes will be judged within their pens.

Pens need to be booked and paid for in addition to the class entry fee. Book pens in the Shop section of the website when you make your entry.

Class S159: Pen of Three Shearling Ewes - sired by a native ram

Class S160: Pen of Three Butchers Lambs - sired by a native ram

Class S161: Pen of Three Shearling Ewes - sired by a continental ram

Class S162: Pen of Three Butchers Lambs - sired by a continental ram

Class S163: Champion Pen of Shearling Ewes

Sevenoaks Fatstock Association will present a Challenge Cup (T134) to the best pen of shearling ewes (from classes S159 & S161)

Class S164: Champion Pen of Commercial Lambs

Sevenoaks Fatstock Association will present a Challenge Cup (T135) to the best pen of butchers lambs (from classes S160 & S162)

Class S165: Commercial Breeding Championship

The prize winners of classes S163 - S164 will go forward to this championship.

The Capenor Bowl (T66) will be presented to the Champion of the Commercial Breeding Classes.

WOOL ON THE HOOF

Monday 30th August 2026
Judge: Tony Pierce, Kent

Entry fee: £2 ON THE DAY ONLY

Prize money:

1st 40% of entry fees

2nd 30% of entry fees

3rd 20% of entry fees



Class S168: Wool on the Hoof - Short Wool

Class S169: Wool on the Hoof - Long Wool

Class S170: Wool on the Hoof Championship

1st and 2nd place winners from Classes S168 & S169 will go through to this championship. Rosettes for Champion and Reserve.



**You've checked over the machinery,
but have you checked yourself?**

If you notice any ongoing, unusual or unexplained changes in your health, talk to your GP and **nip it in the bud.**

FCN | THE FARMING
COMMUNITY
NETWORK

In partnership with

MACMILLAN
CANCER SUPPORT

JUNIOR SHEPHERD

Judge: Alice Wright, Kent
Monday 31st August 2026

FREE ENTRY

Prize money: 1st £15, 2nd £10, 3rd £5

These classes are kindly sponsored by NFU South East Region
The championship is kindly sponsored by Mr D & Mrs J Masters

Judging will commence from 9.00am, with a full timetable available from the Chief Sheep Steward on Saturday 29th August.

These classes will be judged on the presentation and turnout of both sheep (40%) and handler (60%). Entries accepted from both accredited and non-accredited sheep. Please note, if the handlers' sheep are not entered in any of the previous breed classes, you MUST book pens for them.

Class J1: Junior Shepherd aged 4-8 years
Sheep or lamb any age, to be led on a halter

Class J2: Junior Shepherd aged 9-12 years
Sheep or lamb any age, to be led on a halter

Class J3: Junior Shepherd aged 13-15 years
Sheep or lamb any age, to be led on a halter

Class J4: Junior Shepherd aged 16-18 years
Sheep or lamb, any age, to be led on a halter

Class J5: Junior Shepherd of the Year Championship
1st and 2nd placed prize winners of classes J1 - J4 will be eligible for this championship.
Prizes: 1st - £20, The Champion Junior Shepherd will be presented with the D.A.R.T.O.P. Challenge Tankard (T154)

FLEECE

Judge: Susie Parish, Hampshire
Sunday 30th August 2026

Entry fee: £3

Prize money: 1st £10, 2nd £7.50, 3rd £5

All fleeces must be delivered to their boxes, ready to be judged by 8.00am on Sunday morning. Please check in with the fleece steward before placing your fleece in its box. Labels for each entry and a catalogue number will be provided upon check in.

Each exhibit shall consist of a single fleece of 2026 clip, which must have been grown on the sheep, the property of an exhibitor. Fleeces tied with string or any material other than wool itself will be disqualified. Please include which breed or cross the wool is in the notes section of your entry.

Class S174: British Long Wool and Lustre
To include Romney & Border Leicester

Class S175: British Short Wool

Class S176: Naturally Coloured Wool

Class S177: Any Other Breed or Cross of Wool
Including continental

Class S178: **Champion Fleece**
1st and 2nd placed prize winners of classes S174-S177 will be eligible for this championship.

Discounts for Members

Membership of our show is a great way to show your ongoing support and to stay up to date with all our news. Membership comes with various benefits for added value, including access to the Members' Marquee area at the show each year.

Affordability is key, with membership starting at just £66 per year. This brings our members exclusive discounts on entry fees and grants entry to the show for both days.

We issue newsletters for members to keep you in touch with our developments through the year.

Enjoy a drink from the Members' bar, linger over a delicious two-course lunch or grab a lighter bite to eat whilst watching all the action in the Main Ring.

Could you become a sponsor?

You might have noticed that some of our competition classes have a sponsor who kindly contributes to the prize fund. Sponsors can be individuals or companies. We can offer a package of benefits to help you get the most from your support.

We acknowledge sponsors in our prize schedules (printed and online) and we can tailor a great sponsorship package to suit you that can increase your visibility with our competitors and visitors.

For more information and an informal chat about the opportunities for sponsorship then please call or email our Show Office.

Contact: Judy Whittaker, Show Director, on 01342 832307 or email: showdirector@edenbridge-show.co.uk



Keep up with our news and join the conversation on our social media feeds. Search @EdenbridgeOxtedShow

General Regulations

1. Entries for cattle, sheep & pigs may be made online at www.edenbridge-show.co.uk or on a printed entry form and must be delivered or sent to the Show Office, with the entry fee on or before the close of entries.
 2. All exhibitors are required to hold appropriate public liability insurance for their livestock and to produce evidence of this on request.
 3. Exhibitors must declare where relevant if they are part of accredited health schemes.
 4. All cattle, goat and pig entries must have been the bona fide property of the Exhibitor at least three calendar months before the show day, and at least one calendar month for sheep entries.
 5. Definition of Exhibitor Bred: An animal is defined as "Exhibitor Bred" if it is born in the UK or Republic of Ireland and carries the owner's prefix. This includes animals born as a result of embryo transplant. An animal in joint ownership qualifies as Exhibitor Bred providing it has been jointly entered and one of the joint owners is the breeder.
 6. It is the Exhibitor's responsibility to ensure that they comply with eligibility requirements for each class and that the information supplied on the class entry is accurate. Every Exhibitor shall prove the correctness of their entry to the satisfaction of the Committee when called upon to do so, or failing to furnish the required proof, may be prohibited from exhibiting, and any prize awarded may be withheld and the award cancelled.
 7. Entry fees will be forfeited if the animal does not come forward for their class without a valid reason. A refund will be considered if the animal is medically unable to compete. A refund request will need to be completed, in writing, within 1 month of the date of the show. A vet's certificate must be supplied with the refund request. Refunds will only be considered after the show.
 8. Should it become necessary to cancel any livestock classes owing to DEFRA/APHA regulations, the whole of the entrance fee paid by the Exhibitors of these classes will be refunded.
 9. In all classes the Committee reserves the right of rejection of the entry of any person and also the right of withholding any prize or prizes awarded.
 10. The Committee reserves the right to restrict the number of entries in any class and to split or merge classes as the Chief Steward of the section deems fit.
 11. To be eligible to make entries at Members' rates an Exhibitor must have paid the annual subscription for the current year, 2026. Members must have paid their membership prior to making their entry to ensure that they are eligible for Members' rates.
 12. Prize money will be paid electronically into the entrant's nominated bank account after the event. The Show Office will make every effort to make such payments within 30 days of the show. Entrants should take care to ensure they enter the correct information on the entry form. All queries and claims regarding prize money must be submitted before 10th October 2026.
 13. Exhibitors in all classes must ensure they have sufficient stockmen in attendance, especially if multiple entries are made. Stockmen in charge of animals must be subject to the orders of the Stewards and must be in attendance during the whole period of the Show. Handlers must be a minimum age of 4 years or over.
 14. Exhibitors and their associated party must have the correct, valid wristbands in order to access the Showground. Additional wristbands may be purchased from the Shop section of the website at: www.edenbridge-show.co.uk
 15. Pass Allocation per section

Animals Entered	1 - 4	5 - 6	7 +
Pass Allocation	2	3	4

Commercial Sheep - 2 passes if no pedigree sheep are also entered
- Children 15 and under do not need an allocated or chargeable wristband if attending with a livestock exhibitor. Children will be given a wristband by the Chief Steward of their section on arrival. All competitors must wear a valid wristband throughout.
16. For livestock exhibitors wishing to camp, a camping/caravan permit can be purchased when making entries or at a later date. A camping pass will be needed for a tent, motorhome or caravan that will take up additional space in the Livestock Car

General Regulations (continued)

Park. Passes can be purchased for £20 (first pass, then a further maximum of two at £30 each) and are valid for staying on site between 29th & 31st August 2026. There is no electric hook-up offered. Special arrangements exist for schools and official Young Farmer groups. Please contact the Show Office to discuss.

17. Penning Fees

Cattle	Sheep	Pigs	Goats
£11	£6	£6	£15

18. Straw will be provided for the first bedding only. Livestock are housed in marquees.

19. Penning fees will be refunded if an animal is medically unable to compete, providing the Exhibitor notifies the Show Office no less than 48 hours before the date of the Show.

20. Animals may arrive during Saturday 29th August 2026 (between 8.00am and 6.00pm) and must remain on the showground for the duration of the Show. No animal to be removed from its place in the Showground before 5.00pm on Monday 31st August 2026 without a written permit from the Show Office or the Chief Steward of their related section.

21. If any animal shall be proved to be suffering from any contagious or infectious disease at the time it is sent to the Show, the Exhibitor thereof shall indemnify the Society against all or any claims for losses sustained.

22. Animals must be shown according to their breed society and breed association standards and rules. All pedigree animals competing as such must be registered with the appropriate breed society.

23. All Exhibitors are reminded to report the movement of livestock off their farm and then back onto their farm after the show.

24. It is the Exhibitor's responsibility to ensure that all current legislation is met with regards to showing any livestock. If in doubt, please contact Surrey Trading Standards (Tel: 0300 123 2329) <https://www.surreycc.gov.uk/business-and-consumers/trading-standards/business-advice/animal-health>

25. The following practices are not permitted for the purpose of the preparation of an animal for presentation at the Show:

* The infusion or injection of any drugs or any other substance or the insertion of any object into the teats, udder, blood vessels, muscles or under the skin of any animal or otherwise into an animal to restrict the flow of milk.

* The setting of the teats of an animal with any form of glue or other setting substance or any other action which alters the natural teat placement of an animal.

* The sealing of an animal's teats with any form of glue or other substance which prevents a cow reducing pressure on her udder through natural leakage.

* Any surgery to the mammary system of an animal at any time during the life of the animal which is designed to alter its physical attributes, except the removal of supernumerary teats.

* Performing surgery of any kind to change the natural contour or appearance of the animal's body, hide or hair. (Not included is the removal of warts and horns, clipping and dressing of hair and trimming of hooves).

* Roping udders and the use of objects to improve definition of the suspensory centre ligament physically or balancing the udder by any means other than by leaving naturally produced milk in any or all quarters.

* Filling an animal's rumen unnaturally with liquid (tubing).

26. All animals receiving a prize, reserve or commended rosette will be required (under penalty of disqualification) to be ready to parade when required.

27. Trophies presented at the Show to be held for one year.

28. No one will be allowed in the ring while the judges are engaged upon their awards, except those who have duties to perform.

29. The judges may withhold any prize where there is evident want of merit. No second prize will be awarded unless there are at least three entries in a class and two individual exhibitors, and no third prize unless there are at least five entries.

30. Any class may be cancelled or, where appropriate, amalgamated unless there are at least three entries.

31. A class is deemed to have commenced when an

General Regulations (continued)

animal enters the ring, if the judge is then present in the ring. If the judge is not present then the class shall commence when the judge enters the ring.

32. Judges have been appointed to act as such in events as indicated in the competition schedule. The Committee reserves the right to appoint substitutes for any who may be unavoidably prevented from attending and all entries are accepted upon that understanding.

33. It is the responsibility of the exhibitor to note the name of the judge appointed for the classes they wish to enter and are advised, in the interests of all concerned, not knowingly to enter an animal bred by, previously owned by or with any connections to the judge appointed.

34. The decision of the judge is final.

35. All objections must be made in writing to the Show Office within one hour of the termination of the judging of the class(es) in question on the day of the Show; such objection to be accompanied by a deposit of £5.00, this deposit to be forfeited in the event of the objection proving unfounded and/or frivolous.

36. Data given upon entry of any classes to Edenbridge & Oxted Agricultural Show will be retained and used to provide you with reasonable information about your participation and about the event in general. It may also be provided to various and relevant societies for checking eligibility, for publication of results and may be published in the Show's catalogue, social media and website. By providing data you are giving permission for that data to be stored on the Show's systems and databases. The Show's Privacy Notice can be found on our website at www.edenbridge-show.co.uk. By entering a competition class you permit the Show Organisers to use your name and photographs of you and your exhibit in our publicity material. This could be online, in print and could be supplied to third party media organisations for publication.

37. In the event of an Exhibitor, or anyone connected with an Exhibitor, being guilty of improper or abusive behaviour towards their animal, any official of the society or the general public, then the Chairman, Chief Steward or Show Director shall have the power

to order the offender to leave the showground and recommend that the Council shall refuse that person's entries for future shows. Should an Exhibitor be aggrieved at such action they may lodge an objection in writing for consideration after the show. Such objections shall be considered by a panel of not less than 3 members of the Society appointed by the Chairman or Vice-Chairman and their decision shall be final.

38. All of the Stewards and Committees are volunteers who dedicate their time to organising and running the Edenbridge & Oxted Agricultural Show. We kindly ask that you respect them during the event.

39. The Organisers of this show have taken reasonable precautions to ensure the health and safety of everyone present. For these measures to be effective, everyone must take all reasonable precautions to avoid and prevent accidents occurring and must obey the instructions of the Organisers and all the Officials and Stewards.

40. Neither the Society nor its officers or servants shall be liable for personal injury or loss of or damage to any property whatsoever happening to or arising out of the presence of any person at the Society's Show and caused by the wrongful act or omission of the Society, its officers or servants, and it is a condition of entry to the Show that any person visiting the Show, including any Exhibitors, competitors or their servants shall indemnify the Society, its officers or servants against all liabilities, claims, proceedings, costs and demands arising out of such act or omission. The Show requires all exhibitors and competitors to hold third party liability insurance for the duration of the event.

41. The Event Safety Officer will be assisted by the Show's stewards, security and medical staff. The Show will implement any legislative requirements and make every effort to follow best practice advice both during the build-up and operation of the Show. The exhibitor assumes responsibility for ensuring that their exhibits and activities comply with all legal requirements as may be in place at the time of the event to protect the safety of exhibitors and public alike.

42. Force majeure: Whilst every effort will be made

General Regulations (continued)

to ensure the event takes place as planned, if natural disaster, extreme weather, act of God, war, act or threat of terror, civil commotion, fire, disease or death of a monarch should prevent the show from running or substantially curtail its activities the show shall not be liable for any losses incurred and reserves the right to refuse refund of fees.

43. Failure to comply with any of the foregoing regulations could result in prize money being withheld, possible disqualification and refusal of entries in future years.

44. Should any questions arise not provided for in the foregoing rules and regulations, the same must be referred to the Committee, whose decision shall be final.

Specific to Cattle

45. Cattle exhibitors will be eligible to receive a £20 transport levy for each animal forward over 12 months of age. Age determined at the date of the Show. The transport levy will be paid together with any prize money within 1 month after the show to the bank account nominated on the entry.

46. All cattle exhibitors are reminded that the passport must be brought to the Showground in respect of every animal along with pre-movement information if travelling from a TB1 area.

Specific to Sheep

47. Each exhibitor is restricted to 4 pens per breed including a kit pen. This pen restriction is to ensure that all exhibitors and breeds are given a chance to show at the event. It is recommended that sheep are housed with a maximum of two sheep per pen, due to the possibility of heat stress in very hot weather

48. All sheep entered by an exhibitor into a Best Pair or Group of Three class must be the property of the same exhibitor and must have been entered into previous breed classes in their section.

49. Sheep Exhibitors will note that all females of all breeds except Dorset Horn, Polled Dorset and Finnish Landrace to be exhibited are: 1) non-pregnant; 2) have not lambed within 30 days prior to attending the show; 3) not subject to procedures which change the

seasonal breeding pattern.

50. All females of Dorset Horn, Polled Dorset and Finnish Landrace breeds must be accompanied by a declaration stating that each animal is 1) non-pregnant; 2) has not lambed in the previous 30 days.

51. All sheep, regardless of age or breed, must be ear tagged with the flock mark or herd mark prior to movement to the show. Sheep exhibitors are reminded to complete their AML1 forms for sheep movements coming onto and leaving the Showground, plus MV Certificates if applicable.

52. The colouring of sheep wool will NOT be permitted on the Showground. The fleece must be dry upon arrival.

53. No provisions have been made for scrapie-monitored sheep. Individuals who choose to attend do so at their own risk.

Specific to Pigs

54. All pigs coming to the show must be accompanied by an eAML2 form. Inbound and Outbound. NOTE: Electronic Movement Licensing - eAML2 combine AML2 and FCI forms into one.

55. All pigs must be registered with their respective breed society.

56. Exhibitors must display a copy of the pig's registration certificate on the pen to verify pedigree registration and ownership.

57. All pigs must be correctly tagged and the information should match with the registration certificate displayed

58. No pigs under the age of 4 months will be entered. Piglets accompanying a sow must be at least 3 weeks of age and individually tagged.

59. Boars over 12 months of age must have tusks trimmed and be shown by 2 adult handlers (over 18 years) with proper boards and sticks/batons.

60. Handlers are required to be of smart appearance with appropriate footwear; white coats must be worn at all times in the show ring. Proper pig boards and sticks must be used. Pig boards should not show any form of individual advertising or herd names.

61. A competent person must be in attendance with each lot of pigs for the duration of the show and all

General Regulations (continued)

attendants must comply with reasonable requests from the Stewards.

62. Boars over a year old must have sired a litter within 12 months prior to show.

Specific to Goats

63. Goat entries may be made on a printed entry from which can be downloaded from the website. Goat entries should be emailed to the Chief Goat Steward, Rachel Fox, on rachelfoxuk2002@yahoo.co.uk or alternatively mailed c/o BGS, PO Box 137, Swanley, Kent BR8 9BW. All goat exhibits must be registered with the British Goat Society as in the ownership and in the name of the Exhibitor, the registered name and number being quoted on the entry form, and also the kidding date for goats in milk. The registered number of any goat initially entered as RAF (Registration Applied For) must be submitted to the Chief Steward before that goat competes.

64. All goats in milk must have kidded or aborted a minimum of thirty (30) days prior to the show. No pregnant goat will be admitted to the showground.

65. The show is open to goats from herds that are whole herd negative CAE tested within the twelve months prior to the show. Whole herd negative CAE tested means an entire herd in which all animals over one year old hold a current negative CAE test certificate, and all kids should have a current negative CAE test certificate for their dams. The show will also be open to herds that are registered as CAE Accredited under the Premium Sheep and Goat Health Scheme (PSGHS) operated by SRUC (Scotland's Rural College, previously SAC). Exhibitors must ensure that they comply with the Scheme's rules and conditions whilst on the showground.

If any herds have had a positive CAE result, they must provide two clear whole herd tests, completed since the reactor has been culled. The tests must not be more than 12 months apart and not less than 6 months apart.

Exhibitors are advised that milk that has been through the communal weigh bucket should not be fed to kids, as this has been a factor in the spread of CAE

66. All goats in milk will be stripped out to the

satisfaction of stewards by 7pm on Saturday 29th August 2026.

Don't miss our Stockman's Tent entertainment!

All Time Catering are warmly welcomed back to our Stockman's Restaurant with a delicious full English breakfast and full menu throughout each day for lunch and evening meal. They'll be cooking using locally sourced ingredients and quality local meat with food available from Saturday lunchtime.

The Stockman's bar will be open from Friday night for our exhibitors, trade stands, volunteers and members to come and enjoy a drink. It'll be fully stocked to include a great selection of amazing local ales.

Saturday and Sunday night at Stockman's are nothing short of legendary and our livestock exhibitors are warmly invited to join the party with live music to get everyone up on the dance floor for an unforgettable night of fun.



ENTER ONLINE! www.edenbridge-show.co.uk

Edenbridge & Oxted Show Office,
The Old Dairy, Wintersell Farm,
Dwelly Lane, Edenbridge, Kent TN8 6QD

T: 01342 832307

E: info@edenbridge-show.co.uk

Registered charity no. 1102127
Company limited by guarantee - incorporation no. 4682208