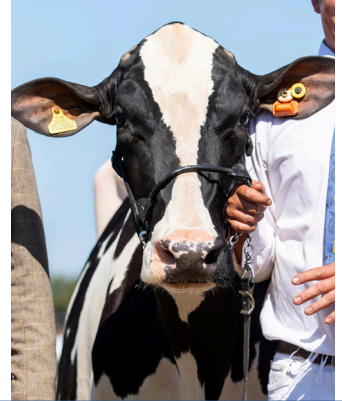


# EDENBRIDGE & OXTED

## AGRICULTURAL SHOW

Celebrating the country way of life since 1831



*Sunday 30<sup>th</sup> & Monday 31<sup>st</sup> August 2026*

## *Cattle Section*

### *Schedule of entry*

Entries close 24<sup>th</sup> July 2026

Please see our website for other show schedules and enter  
online at: [www.edenbridge-show.co.uk](http://www.edenbridge-show.co.uk)

CPH: 40/129/8000

Edenbridge & Oxted Show Office, The Old Dairy, Wintersell Farm,  
Dwelly Lane, Edenbridge, Kent TN8 6QD

T: 01342 832307

E: [info@edenbridge-show.co.uk](mailto:info@edenbridge-show.co.uk)

Registered charity no. 1102127  
Company limited by guarantee - incorporation no. 4682208



We allocate passes which are valid for Showground entry from Saturday to Monday. Children under 16 in your party will be given a free wristband on arrival. Additional wristbands are £40 each. Buy extra livestock wristbands online at [www.edenbridge-show.co.uk](http://www.edenbridge-show.co.uk) when you submit entries.

**PASS ALLOCATION:**

Animals Entered	1 - 4	5 - 6	7 +
Pass Allocation	2	3	4

**Camping passes** are available for purchase for **exhibitors only** online at £20 each for the first pass, with a maximum of two further passes at £30 each.

Camping space is limited and is offered to help ensure you can be on site to care for your livestock. Camping passes booked must be proportionate to your overall booking.

Anyone bringing a tent, caravan or motorhome will need a camping pass.

Schools & Young Farmers - please contact us **before** booking camping as discounted rates will apply.



Show Members receive a discount on class entry fees. Membership for 2026 begins at just £66 and can be bought online when making your entries.

All cattle entered in pedigree breed classes must be registered with their respective breed society.

# Volunteer Agriculture Committee

Rhys Grenham (Joint Chairman & Chief Cattle Steward), Jo Masters (Joint Chairman)  
Chloe Wood (Vice Chairman)

Laurence Angus  
Mike Deakins  
Rachel Fox  
Oliver Giles  
David Heasman  
Brenda Hide

Melanie Isted  
Edward Kingshott  
Donald Masters  
Claire Maydon  
Alex Moss  
Maria Naylor

Richard Pemble  
Ruth Perry  
Bill Peters  
Kevin Reed  
Sam Turner  
David Wood

---

John Downing (Joint Show Chairman)  
Holly Taylor (Joint Show Chairman)  
Jo Masters (Joint Show Vice Chairman)  
Alastair Roberts (Joint Show Vice Chairman)

Helen Mahy CBE (Show President)  
Linda Charlton (Honorary Treasurer)  
Judy Whittaker (Show Director)

---

## LIVESTOCK GATE OPENING HOURS

SATURDAY 8am - 6pm

All livestock must arrive at the Showground during this time and must remain until the show closes on Monday at around 5pm. This time is approximate and subject to the Event H&S Officer permitting the opening of gates.



### REMEMBER TO BOOK YOUR STALLS!

Each cattle stall is £11 - you must book and pay for all the stalls you need at the time of making your entry.

Stalls and camping passes are items for purchase in the 'Competing' area of the website.

*Just visit [www.edenbridge-show.co.uk](http://www.edenbridge-show.co.uk) to see the class listings and make your entry. Don't forget to buy your membership to qualify for great discounts on class fees.*

# BEEF CATTLE

## *Any Other Continental Beef Breed*

Judge: Mary Cormack, Herefordshire  
Sunday 30th August 2026

Entry fee: Members £11, Non-Members £18  
Prize money: 1st £40, 2nd £30, 3rd £20

Class C1: Any Other Continental Beef Breed Cow (in milk or in calf)

Class C2: Any Other Continental Beef Breed Heifer (in milk or in calf)

Class C3: Any Other Continental Beef Breed Junior Heifer, born in 2025

Class C4: Any Other Continental Beef Breed Junior Bull, born on or after 1st January 2025

Class C5: Any Other Continental Beef Breed Senior Bull, born before 1st January 2025

### **Class C6: Any Other Continental Breed Junior Championship**

1st & 2nd prize winners from C3 & C4 are eligible. Prizes: rosettes only

### **Class C7: Any Other Continental Beef Breed Female Championship**

1st & 2nd prize winners from C1 - C3 are eligible. Prizes: rosettes only

### **Class C8: Any Other Continental Beef Breed Male Championship**

1st & 2nd prize winners from C4 & C5 are eligible. Prizes: rosettes only

### **Class C9: Any Other Continental Beef Breed Championship**

**The champion and reserve champion from C7 & C8 are eligible for this championship. Prizes: 1st - £50, 2nd - £30**

### **LONG SERVICE AWARDS - Make a nomination!**

Long service awards will be presented to the three longest serving employees who have completed a minimum of thirty years' service without intermission on the same farm or estate or under the same employer.

Details giving dates of service and full names of employees, signed by the employer, should be sent to the Show Office no later than 25th July 2026.

Application forms available from: Edenbridge & Oxted Agricultural Show - call 01342 832307 or email [info@edenbridge-show.co.uk](mailto:info@edenbridge-show.co.uk)

## *Any Other Native Beef Breed*

Judge: Arthur Hill, Shropshire  
Sunday 30th August 2026

Entry fee: Members £11, Non-Members £18  
Prize money: 1st £40, 2nd £30, 3rd £20

Class C12: Any Other Native Beef Breed Cow (in milk or in calf)

Class C13: Any Other Native Beef Breed Heifer (in milk or in calf)

Class C14: Any Other Native Beef Breed Junior Heifer, born in 2025

Class C15: Any Other Native Beef Breed Junior Bull, born on or after 1st January 2025

Class C16: Any Other Native Beef Breed Senior Bull, born before 1st January 2025

### **Class C17: Any Other Native Beef Breed Junior Championship**

1st & 2nd prize winners from C14 & C15 are eligible. Prizes: rosettes only

### **Class C18: Any Other Native Beef Breed Female Championship**

1st & 2nd prize winners from C12 - C14 are eligible. Prizes: rosettes only

### **Class C19: Any Other Native Beef Breed Male Championship**

1st & 2nd prize winners from C15 & C16 are eligible. Prizes: rosettes only

### **Class C20: Any Other Native Beef Breed Championship**

**The champion and reserve champion from C18 & C19 are eligible for this championship. Prizes: 1st - £50 & Sanderson Hall and Son Trophy (T93), 2nd - £30 & The Waterfield Trophy (T91)**



*Keep up with our news and join the conversation on our social media feeds. Search @EdenbridgeOxstedShow*

# Aberdeen Angus

Judge: Emma Hodge, Berwickshire  
Sunday 30th August 2026

Entry fee: Members £11, Non-Members £18  
Prize money: 1st £40, 2nd £30, 3rd £20

This section is kindly sponsored by Strutt & Parker

Class C23: Aberdeen Angus Cow or Heifer (in milk or in calf). Born before 1st January 2024

Class C24: Aberdeen Angus Senior Heifer. Born on or after 1st January 2024 and before 1st January 2025

Class C25: Aberdeen Angus Junior Heifer, born on or after 1st January 2025

Class C26: Aberdeen Angus Junior Bull, born on or after 1st January 2025

Class C27: Aberdeen Angus Senior Bull, born before 1st January 2025

## **Class C28: Aberdeen Angus Junior Championship**

1st & 2nd prize winners from C25 & C26 are eligible. Prizes: rosettes only

## **Class C29: Aberdeen Angus Female Championship**

1st & 2nd prize winners from C23 - C25 are eligible. Prizes: rosettes only

## **Class C30: Aberdeen Angus Male Championship**

1st & 2nd prize winners from C26 & C27 are eligible. Prizes: rosettes only

## **Class C31: Aberdeen Angus Championship**

**The champion and reserve champion from C29 & C30 are eligible for this championship. Prizes: 1st - £50, The Aberdeen Angus Society offers a special rosette to the best animal bred by an exhibitor.**

**2nd prize - £30**

*Don't forget the paperwork! All cattle will need to be checked in and out of our holding with our stewards.*

*We are in a TB4 area*

CPH: 40/129/8000

# Beef Shorthorn

Judge: Emma Hodge, Berwickshire  
Sunday 30th August 2026

Entry fee: Members £11, Non-Members £18

Prize money: 1st £40, 2nd £30, 3rd £20

This section is kindly sponsored by Strutt & Parker

Exhibitors must be members of the Shorthorn Society of the UK & Ireland. All cattle must be registered in Coate's Herd Book, be of Shorthorn colour and contain a minimum of 25% Shorthorn Blood. All animals must be registered with the Beef Shorthorn Cattle Society. Grading register animals are not eligible to be shown.

Class C34: Beef Shorthorn Cow (in milk or in calf)

Class C35: Beef Shorthorn Senior Heifer (in milk or in calf)

Class C36: Beef Shorthorn Junior Heifer, born in 2025

Class C37: Beef Shorthorn Junior Bull, born in 2025

Class C38: Beef Shorthorn Senior Bull, born before 1st January 2025

## **Class C39: Beef Shorthorn Junior Championship**

1st & 2nd prize winners from C36 & C37 are eligible. Prizes: rosettes only

## **Class C40: Beef Shorthorn Female Championship**

1st & 2nd prize winners from C34 - C36 are eligible. Prizes: rosettes only

## **Class C41: Beef Shorthorn Male Championship**

1st & 2nd prize winners from C37 & C38 are eligible. Prizes: rosettes only

## **Class C42: Beef Shorthorn Championship**

**The champion and reserve champion from C40 & C41 are eligible for this championship. Prizes: 1st - £50, 2nd - £30.**

**The Bob Isted Memorial Trophy will be awarded to the Champion.**

**The Beef Shorthorn Society kindly awards a Champion and Reserve Champion Rosette**

## British Blonde

Judge: Julie Rooks, Devon  
Sunday 30th August 2026

Entry fee: Members £11, Non-Members £18

Prize money: 1st £40, 2nd £30, 3rd £20

If insufficient entries for this section are received, classes will be amalgamated into the Any Other Continental Breed of Beef section.

Class C45: British Blonde Cow (in milk or in calf). Born before 1st January 2024

Class C46: British Blonde Senior Heifer, born on or after 1st January 2024 and before 1st January 2025

Class C47: British Blonde Junior Heifer, born on or after 1st January 2025

Class C48: British Blonde Junior Bull, born on or after 1st January 2025

Class C49: British Blonde Senior Bull, born before 1st January 2025

### **Class C50: British Blonde Junior Championship**

1st & 2nd prize winners from C47 & C48 are eligible. Prizes: rosettes only

### **Class C51: British Blonde Female Championship**

1st & 2nd prize winners from C45 - C47 are eligible. Prizes: rosettes only

### **Class C52: British Blonde Male Championship**

1st & 2nd prize winners from C48 & C49 are eligible. Prizes: rosettes only

### **Class C53: British Blonde Championship**

**The champion and reserve champion from C51 & C52 are eligible for this championship. Prizes: 1st - £50, 2nd - £30**

**The British Blonde Society will present a sash to the Champion British Blonde. The South East Blonde Club will present the Grain Harvesters' Cup to the Champion British Blonde Female (T148), The South East Blonde Club will present The Beevers' Perpetual Challenge Trophy to the Champion Male British Blonde (T147).**



*Keep up with our news and join the conversation on our social media feeds. Search @EdenbridgeOxtedShow*

# British Blue

Judge: Julie Rooks, Devon  
Sunday 30th August 2026

Entry fee: Members £11, Non-Members £18

Prize money: 1st £40, 2nd £30, 3rd £20

If insufficient entries for this section are received, classes will be amalgamated into the Any Other Continental Breed of Beef section.

Class C56: British Blue Cow (in milk or in calf). Born before 1st January 2024

Class C57: British Blue Senior Heifer, born on or after 1st January 2024 and before 1st January 2025

Class C58: British Blue Junior Heifer, born on or after 1st January 2025

Class C59: British Blue Junior Bull, born on or after 1st January 2025

Class C60: British Blue Senior Bull, born before 1st January 2025

## **Class C61: British Blue Junior Championship**

1st & 2nd prize winners from C58 & C59 are eligible. Prizes: rosettes only

## **Class C62: British Blue Female Championship**

1st & 2nd prize winners from C56 - C58 are eligible. Prizes: rosettes only

## **Class C63: British Blue Male Championship**

1st & 2nd prize winners from C59 & C60 are eligible. Prizes: rosettes only

## **Class C64: British Blue Championship**

**The champion and reserve champion from C62 & C63 are eligible for this championship. Prizes: 1st - £50, 2nd - £30. The British Blue Cattle Society kindly offers special rosettes to the Champion and Reserve Champion British Blue.**

We allocate passes which are valid for Showground entry from Saturday to Monday. Buy extra wristbands (£40 each) when making your entries online. You do not need to buy passes for children - they will be given a wristband by the section Chief Steward on arrival.

### PASS ALLOCATION:

Animals Entered	1 - 4	5 - 6	7 +
Pass Allocation	2	3	4

## *British Charolais*

Judge: Julie Rooks, Devon  
Sunday 30th August 2026

Entry fee: Members £11, Non-Members £18

Prize money: 1st £40, 2nd £30, 3rd £20

Class C67: British Charolais Cow (in milk or in calf). Born on or before 31st December 2024

Class C68: British Charolais Senior Heifer, born on or after 1st January 2024 and before 1st January 2025

Class C69: British Charolais Junior Heifer, born on or after 1st January 2025

Class C70: British Charolais Junior Bull, born on or after 1st January 2025

Class C71: British Charolais Senior Bull, born before 1st January 2025

### **Class C72: British Charolais Junior Championship**

1st & 2nd prize winners from C69 & C70 are eligible. Prizes: rosettes only

### **Class C73: British Charolais Female Championship**

1st & 2nd prize winners from C67 - C69 are eligible. Prizes: rosettes only

### **Class C74: British Charolais Male Championship**

1st & 2nd prize winners from C70 & C71 are eligible. Prizes: rosettes only

### **Class C75: British Charolais Championship**

**The champion and reserve champion from C73 & C74 are eligible for this championship. Prizes: 1st - £50, 2nd - £30. The Champion British Charolais will receive the Warninglid Trophy, kindly awarded by Mr A J Lavell (T94). The British Charolais Society kindly donates a Champion rosette.**

**GRAND PARADE OF LIVESTOCK**  
*Main Ring - 2.30pm on Monday*

## British Limousin

Judge: Mary Cormack, Herefordshire  
Sunday 30th August 2026

Entry fee: Members £11, Non-Members £18

Prize money: 1st £40, 2nd £30, 3rd £20

This section is kindly sponsored by ABP Guildford and by the  
South East Limousin Cattle Club

Class C78: British Limousin Cow (in milk or in calf)

Class C79: British Limousin Senior Heifer, born in 2023. In calf or with own calf at foot.

Class C80: British Limousin Maiden Heifer, born on or after 1st January 2024

Class C81: British Limousin Junior Heifer, born in 2025

Class C82: British Limousin Junior Bull, born on or after 1st January 2025

Class C83: British Limousin Senior Bull, born before 1st January 2025

### **Class C84: British Limousin Junior Championship**

1st & 2nd prize winners from C81 & C82 are eligible. Prizes: rosettes only

### **Class C85: British Limousin Female Championship**

1st & 2nd prize winners from C78 - C81 are eligible. Prizes: rosettes only

### **Class C86: British Limousin Male Championship**

1st & 2nd prize winners from C82 & C83 are eligible. Prizes: rosettes only

### **Class C87: British Limousin Championship**

**The champion and reserve champion from classes C85 & C86 are eligible for this championship. Prizes: 1st - £50, 2nd - £30**

**The South East Limousin Cattle Club offers special rosettes to the best homebred male and female exhibited by an SELCC member. The Champion British Limousin will be presented with the YFC Mrs A J Shore Trophy (T95)**



*Keep up with our news and join the conversation on our social media feeds. Search @EdenbridgeOxstedShow*

# British Simmental

Judge: Julie Rooks, Devon  
Sunday 30th August 2026

Entry fee: Members £11, Non-Members £18  
Prize money: 1st £40, 2nd £30, 3rd £20

Class C90: British Simmental Cow or Heifer (in calf or with own calf at foot)  
Born in or before 2023.

Class C91: British Simmental Senior Heifer, born in 2024

Class C92: British Simmental Intermediate Heifer, born between 1st January  
2025 and 31st March 2025.

Class C93: British Simmental Junior Heifer, born on or after 1st April 2025

Class C94: British Simmental Junior Bull, born on or after 1st April 2025

Class C95: British Simmental Intermediate Bull, born between 1st January  
2025 and 31st March 2025

Class C96: British Simmental Senior Bull, born before 1st January 2025

## **Class C97: British Simmental Junior Championship**

1st & 2nd prize winners from C93 & C94 are eligible. Prizes: rosettes only

## **Class C98: British Simmental Female Championship**

1st & 2nd prize winners from C90 - C93 are eligible. Prizes: rosettes only

## **Class C99: British Simmental Male Championship**

1st & 2nd prize winners from C94 - C96 are eligible. Prizes: rosettes only

## **Class C100: British Simmental Championship**

**The champion and reserve champion from classes C98 & C99 are eligible for this championship. Prizes: 1st - £50, 2nd - £30. The Champion British Simmental will be presented with the Moss Bros Trophy (T92). The British Simmental Cattle Society kindly offers special rosettes to the Champion and Reserve Champion Simmental.**

We allocate passes which are valid for Showground entry from Saturday to Monday.

Buy extra wristbands (£40 each) when making your entries online. You do not need to buy passes for children - they will be given a wristband by the section Chief Steward on arrival.

### PASS ALLOCATION:

Animals Entered	1 - 4	5 - 6	7 +
Pass Allocation	2	3	4

# Dexter

Judge: Mary Kay, Dorset  
Sunday 30th August 2026

Entry fee: Members £11, Non-Members £18  
Prize money: 1st £40, 2nd £30, 3rd £20

Class C103: Dexter Cow or Heifer, in milk

Class C104: Dexter Maiden Heifer, not in calf

Class C105: Dexter Heifer, in calf with first calf

Class C106: Dexter Dry Cow or Heifer - heifer to have calved once

Class C107: Dexter Bull, any age

Class C108: Dexter Calf, any sex, to be under 12 months of age on 1st September 2026.

Class C109: Dexter Group of 3 animals

Animals entered in classes C103 - C107 will be eligible. To be owned by the same exhibitor.

## **Class C110: Dexter Junior Championship**

1st & 2nd prize winners from C104, C107 & C108 are eligible. Only open to animals born on or after 1st January 2025. Prizes: rosettes only

## **Class C111: Dexter Female Championship**

1st & 2nd prize winners from C103-C106 & C108 are eligible. Prizes: rosettes only

## **Class C112: Dexter Male Championship**

1st & 2nd prize winners from C107 & C108 are eligible. Prizes: rosettes only

## **Class C113: Dexter Championship**

**The champion and reserve champion from classes C111 & C112 are eligible for this championship. Prizes: 1st - £50, 2nd - £30. The Champion Dexter will receive the Bilberry Salver, kindly presented by Mr and Mrs Buckett (T101). The Dexter Cattle Society award a Breed Spoon and a special rosette to the Champion Dexter.**



# Hereford

Judge: Mary Cormack, Herefordshire  
Sunday 30th August 2026

Entry fee: Members £11, Non-Members £18

Prize money: 1st £40, 2nd £30, 3rd £20

This section is kindly sponsored by Strutt & Parker

Class C116: Hereford Cow or Heifer (in milk or in calf). Born on or before 31st December 2023

Class C117: Hereford Senior Heifer, born in 2024

Class C118: Hereford Junior Heifer, born in 2025

Class C119: Hereford Junior Bull, born in 2025

Class C120: Hereford Senior Bull, born before 1st January 2025

Class C121: Hereford Best Pair (At least one animal to be female)

## **Class C122: Hereford Junior Championship**

1st & 2nd prize winners from C118 & C119 are eligible. Prizes: rosettes only

## **Class C123: Hereford Female Championship**

1st & 2nd prize winners from C116-C118 are eligible. Prizes: rosettes only

## **Class C124: Hereford Male Championship**

1st & 2nd prize winners from C119 & C120 are eligible. Prizes: rosettes only

## **Class C125: Hereford Championship**

**The champion and reserve champion from classes C123 & C124 are eligible for this championship. Prizes: 1st - £50, 2nd - £30**

**The Champion Hereford will be presented with the Silver Spoon (T79). The South of England Hereford Breeders Association offers a sash and a rosette to the Champion Hereford female and to the Champion Hereford male. The Hereford Breed Society kindly awards a rosette to the Champion Hereford. The Reserve Champion Hereford will be presented with the Lincoln Cup (T124)**

# Highland

Judge: Arthur Hill, Shropshire  
Sunday 30th August 2026

Entry fee: Members £11, Non-Members £18

Prize money: 1st £40, 2nd £30, 3rd £20

This section is kindly sponsored by Hops & Bubbles

Class C128: Highland Cow, in milk or in calf

Class C129: Highland Senior Heifer, in milk or in calf. Born in 2023

Class C130: Highland Maiden Heifer not in calf. Born in 2024

Class C131: Highland Junior Heifer, born in 2025

Class C132: Highland Bull, any age

## **Class C133: Highland Junior Championship**

1st & 2nd prize winners from C131 & C132 are eligible. Only open to animals born on or after 1st January 2025. Prizes: rosettes only

## **Class C134: Highland Female Championship**

1st & 2nd prize winners from C128-C131 are eligible. Prizes: rosettes only

## **Class C135: Highland Male Championship**

1st & 2nd prize winners from C132 & any split class thereof are eligible. Prizes: rosettes only

## **Class C136: Highland Championship**

**The champion and reserve champion from classes C134 & C135 are eligible for this championship. Prizes: 1st - £50, 2nd - £30. The Champion Highland will be presented with the Montreal Estate Challenge Cup (T109). The Highland Cattle Society offers a rosette to the Champion Highland. The Midland and Southern Highland Cattle Club offers a sash to both the Champion and Reserve Champion Highland.**

Winning exhibitors gain points for the Highland Cattle Society's annual Show Fold of the Year competition.

## REMEMBER TO BOOK YOUR STALLS!

Each stall is £11 - you must book and pay for all the stalls you need at the time of making your entry. Please be careful to buy the correct type of stall - for Beef & Dexters or for Dairy.

# Sussex

Judge: Peter Masters, Kent  
Sunday 30th August 2026

Entry fee: Members £11, Non-Members £18  
Prize money: 1st £40, 2nd £30, 3rd £20

Class C139: Sussex Cow or Heifer (in milk or in calf). Born before 1st January 2024 having had a full term calf during the previous 12 months.

This class is kindly sponsored by Mid Downs Farm Vets

Class C140: Sussex Senior Heifer, born in 2024

This class is kindly sponsored by Littlewood Fencing

Class C141: Sussex Junior Heifer, born in 2025

This class is kindly sponsored by Mid Downs Farm Vets

Class C142: Sussex Junior Bull, born on or after 1st January 2025

This class is kindly sponsored by Strutt & Parker

Class C143: Sussex Senior Bull, born before 1st January 2025

This class is kindly sponsored by Strutt & Parker

Class C144: Sussex Best Pair, at least one animal to be female

This class is kindly sponsored by Strutt & Parker

## **Class C145: Sussex Junior Championship**

1st & 2nd prize winners from C141 & C142 are eligible. Prizes: rosettes only

## **Class C146: Sussex Female Championship**

1st & 2nd prize winners from C139 - C141 are eligible. Prizes: rosettes only

## **Class C147: Sussex Male Championship**

1st & 2nd prize winners from C142 & C143 are eligible. Prizes: rosettes only

## **Class C148: Sussex Championship**

Kindly sponsored by Buckhurst Farm

**The champion and reserve champion from classes C132 - C133 are eligible for this championship. Prizes: 1st - £50, 2nd - £30.**

**The Champion Sussex will be presented with the Rohdens Farm Challenge Cup (T51). The Reserve Champion Sussex will be presented with the Mr and Mrs R W Dinnis Challenge Cup (T122)**

# TUCKWELLS SUPER BEEF BULL COMPETITION

Kindly sponsored by Tuckwells

Judge: Brian Wills, Kinross  
Monday 31st August 2026

Entry fee: Members £11, Non-Members £18  
Prizes: 1st - £100, 2nd - £75, 3rd - £50, 4th - £25

Bulls must:

- Be born on or after 1st January 2025
- Be entered in their respective competitive breed class
- Be bred by the Exhibitor
- Be a member of the Beef Breeder Scheme and have a minimum of three adjusted weights at either 100, 200, 300 or 400 days of age.
- Have a beef value in the top 25% of the breed based on the latest beef values.

**Objectives:** to identify the bulls which best combine the traditional values of conformation and the scientific value of performance data.

**Judging Criteria:** to be judged on conformation only.

Exhibitors intending to enter a bull for this competition but who do not know its Beef Value and/or adjusted weights at the close of entries should enter the animal in anticipation that it will qualify to go forward. No entries taken on the day.

Class C151: Native Bull, born on or after 1st January 2025

Class C152: Continental Bull, born on or after 1st January 2025

## **Class C153: The Tuckwells Super Beef Bull Championship**

**The 1st and 2nd prize winners from classes C151 & C152 will be eligible for this championship. The D H Honour Trophy (T18) will be awarded to the champion.**

# COMMERCIAL BEEF

Judge: Frank Page, Northamptonshire  
Sunday 30th August 2026

ANY BREED OR CROSS, NOT TO BE ALSO ENTERED IN A PEDIGREE BREED CLASS

Entry fee: Members £11, Non-Members £18  
Prize money: 1st £40, 2nd £30, 3rd £20

Class C156: Steer - 300kg to 450kg

Class C157: Steer - 450kg to 550kg

Class C158: Steer - 550kg and over

Kindly sponsored by Cox Skips & The Recycling Partnership:

Class C159: Heifer - 300kg to 450kg

Class C160: Heifer - 450kg to 550kg

Class C161: Heifer - 550kg and over

Class C162: Any purebred native steer or heifer, any age

## **Class C163: Commercial Beef Championship**

The 1st and 2nd prize winners from classes C156 - C162 will be eligible for this championship. Prizes: 1st - £300, 2nd - £200

The Felixcombe Challenge Cup (T73) will be awarded to the highest placed steer that has been bred by an exhibitor. The Earl of Cromer Challenge Cup (T57) will be presented to the highest placed heifer that has been bred by an exhibitor. The Champion of the Commercial Beef classes will be presented with the Sevenoaks Fatstock Commercial Beef Challenge Cup (T136), kindly presented by the Sevenoaks Fatstock Association.

*Don't forget the paperwork! All cattle will need to be checked in and out of our holding with our stewards.*

*We are in a TB4 area*

CPH: 40/129/8000

# POTENTIAL SHOW CATTLE CLASSES FOR SCHOOLS & YOUNG FARMERS

Judge: Frank Page, Northamptonshire  
Sunday 30th August 2026

Entry fee: Members £11, Non-Members £18  
Prize money: 1st £40, 2nd £30, 3rd £20

ANY BREED OR CROSS, NOT TO BE ALSO ENTERED IN A PEDIGREE BREED CLASS

Class C166: Steer, any breed or cross. Born on or after 1st April 2024

Class C167: Heifer, any breed or cross. Born on or after 1st April 2024

## **Class C168: Potential Show Cattle Championship**

This class is kindly sponsored by NFU South East Region

**The 1st and 2nd prize winners from classes C166 & C167 will be eligible for this championship. Prizes: 1st - £50, 2nd - £30**

## *The Salcombe Dairy Show Team Award*

Judge: Tory Lugsden, Suffolk

There is no entry fee for this class.

### PRIZES

**\*NEW FIRST PRIZE\*:**

**£500 worth of Salcombe Dairy ice cream!**

1st - £50, 2nd - £25, 3rd - £15, 4th - £10

### CLASS C305

Judged in the cattle lines. Judging criteria covers such aspects as presentation and welfare of cattle, cleanliness of line, marketing and promotion of herd and staff associated with each herd.

# BEEF GROUPS & SWEEPSTAKES

Monday 31st August 2026

Judging will take place immediately after the Warners Solicitors Supreme Pedigree Beef Championship

**Class C171: Inter-beef breed progeny group of 3.** Animals must be by the same sire. Entry fee of £13.00. Prizes: 1st - £35, 2nd - £15, 3rd - £10  
Judge: Brian Wills, Kinross

**Class C172: Group of 3 beef animals,** at least 2 females. All three to be owned by the exhibitor. Entry fee of £13.00. Prizes: 1st - £35, 2nd - £15, 3rd - £10  
Judge: Brian Wills, Kinross

**Class C173: Native beef heifer sweepstake** - open to all heifers of any breed. Must have been entered into another class at the show.  
Entry fee of £5 to be taken on the day - no online entry to this class.  
Judge: Arthur Gray, Kent

Prizes: 1st - The A and B Miller Cup (T126) will be awarded to the winner.

- 1st - 40% of entry fees
- 2nd - 30% of entry fees
- 3rd - 20% of entry fees
- 4th - 10% of entry fees

**Class C174: Continental beef heifer sweepstake** - open to heifers of any beef breed. Must have been entered into another breed class at the show. Entry fee of £5 to be taken on the day. No online entry to this class.  
Judge: Harriet Jackson, Hampshire

Prizes

- 1st - 40% of entry fees
- 2nd - 30% of entry fees
- 3rd - 20% of entry fees
- 4th - 10% of entry fees

# INTERBREED CALF

This section has been kindly sponsored by The Montreal Estate

Judge: Mary Cormack, Herefordshire  
Sunday 30th August 2026

Entry fee: Members £8, Non-Members £13  
Prize money: 1st £20, 2nd £15, 3rd £10

## *Native Interbreed Calf*

Class C180: Native Heifer Calf born between 1st September 2025 - 31st December 2025

Class C181: Native Bull Calf born between 1st September 2025 - 31st December 2025

Class C182: Native Heifer Calf born between 1st January 2026 - 31st July 2026

Class C183: Native Bull Calf born between 1st January 2026 - 31st July 2026

### **Class C184: Native Interbreed Calf Championship**

**The 1st and 2nd prize winners of classes C180 - C183 will be eligible.**

**The Champion and Reserve Champion Native Interbreed Calf will go forward to the Supreme Interbreed Calf Championship.**

**Prizes: 1st - £30, 2nd - £15**

## *Continental Interbreed Calf*

Class C187: Continental Heifer Calf born between 1st September 2025 - 31st December 2025

Class C188: Continental Bull Calf born between 1st September 2025 - 31st December 2025

Class C189: Continental Heifer Calf born between 1st January 2026 - 31st July 2026

Class C190: Continental Bull Calf born between 1st January 2026 - 31st July 2026

### **Class C191: Continental Interbreed Calf Championship**

**The 1st and 2nd prize winners of classes C187 - C190 will be eligible.**

**The Champion and Reserve Champion Continental Interbreed Calf will go forward to the Supreme Interbreed Calf Championship.**

**Prizes: 1st - £30, 2nd - £15**

*continues over...*

**Class C177: Supreme Interbreed Calf Championship**

**The Champion & Reserve Champion Native and Continental Interbreed Calves will be eligible.**

**Prizes: 1st - £50**

**The Quornden Bowl (T6) will be awarded to the champion.**

## **JUNIOR STOCKMAN**

Judge: Lauren Ridgway, Cheshire

Sunday 30th August 2026 - to follow the Commercial Cattle classes

*This section is kindly sponsored by NFU South East Region*

Presentation of the calf, knowledge of the breeding and general welfare will be taken in consideration for the judging. Date of birth of handler should be stated in the notes section on entry.

**NO BULLS OR BULL CALVES**

NO ENTRY FEE

Prizes: 1st - £15, 2nd - £10, 3rd - £5

Class C194: Junior Stockman 6-11 yrs  
Beef calf, not more than 12 months old.

Class C195: Junior Stockman 12-14 yrs  
Beef animal, not more than 24 months old.

Class C196: Junior Stockman 15-18 yrs  
Beef animals not to be more than 30 months old.

**Class C197: Junior Stockman Championship**

**The 1st and 2nd prize winners from classes C194 - C196 will be eligible for this championship.**

**Prizes: 1st - The Champion Young Handler will be presented with £20 and the Col Robinson Young Farmers Cup (T83). The South East Simmental Club will present a Challenge Cup to the leading junior member of the SE Simmental Club in these classes.**

# DAIRY CATTLE

## Judging and scale of points for Production Inspection classes

Judging will take place during Monday afternoon

In classes C222, C253, C263 & C288 the prizes will be awarded in accordance with the total number of points gained by each cow under the following scale:

INSPECTION: Inspection points will be awarded at the discretion of the judge.

MILK RECORD: Two points for each kg of butterfat and protein.

CALVING INTERVAL: One point to be added for every day under 400. One point to be deducted for every day over 400.

(Note: heifer lactations will be eligible with no gain or loss of points for calving interval)

## *Ayrshire Calf Show*

Kindly sponsored by Mr D Heasman

Judge: Peter Berresford, Derbyshire  
2pm, Sunday 30th August 2026

Entry fee: Members £5, Non-Members £8

Prizes: 1st - £20, 2nd - £15, 3rd - £10

### CALF CLASSES

Registration certificates must be brought to the show and will be checked by the stewards. It is the responsibility of the co-ordinator to ensure that all calves are correctly identified against their registration certificates. Any calf unsatisfactorily identified at the show will not be allowed to participate.

Class C200: Ayrshire Calf - Born on or after 1st February 2026

Class C201: Ayrshire Calf - Born between 1st December 2025 and 31st January 2026

Class C202: Ayrshire Calf - Born between 1st October and 30th November 2025

Class C203: Ayrshire Calf - Born between 1st August and 30th September 2025

Class C204: Ayrshire Calf - Born between 1st June and 31st July 2025

Class C205: Ayrshire Calf - Born between 1st April and 31st May 2025

*continues over...*

### **Class C206: Champion Ayrshire Calf**

**The 1st and 2nd prize winners from classes C200 - C205 will be eligible for this championship. The Champion Ayrshire Calf will receive the South Eastern Ayrshire Trophy (T50)**

### SHOWMANSHIP CLASSES

*Animals being used for entries into the showmanship classes must be of an age that would make them eligible to enter the preceding calf show within this section.*

*Junior Handler Classes - Handlers must be able to lead an animal of an appropriate size without assistance. An adult may be present in the ring during the class but must not provide assistance.*

Class C209: Ayrshire Calf - Junior Handler, 12 years of age and under on 1st January 2026.

Class C210: Ayrshire Calf - Intermediate Handler, aged between 13 & 15 years on 1st January 2026.

Class C211: Ayrshire Calf - Senior Handler, aged between 16 & 20 years on 1st January 2026.

Class C212: Ayrshire Calf - Mature Handler, aged between 21 & 26 years on 1st January 2026.

### **Class C213: Ayrshire Calf - Champion Handler**

**1st and 2nd prize winners from classes C209 - C212 will be eligible for this championship.**

### *Stockmans Presentation Awards*

Judge: Brenda Hide, East Sussex

All cattle exhibitors will automatically be eligible.

#### PRIZES

1st - £25, 2nd - £15, 3rd - £10 (each section)

CLASS C306 - BEEF

CLASS C307 - DAIRY

For the best turned out handler and animal. Competition judged over the two days of the show.

Winner of C306 to receive The George & Pam Cook Memorial Cup (T141)

The Dairy section has been kindly sponsored by Designer Holsteins

# Ayrshire

Judge: Peter Berresford, Derbyshire  
Monday 31st August 2026

Entry fee: Members £11, Non-Members £18

Prizes: 1st - £40, 2nd - £30, 3rd - £20

Class C216: Ayrshire Bulling Heifer, aged under 21 months. Not in calf.

Class C217: Ayrshire Heifer. In calf, with first calf. To calve before 1st December 2026.

Class C218: Ayrshire Cow. In calf. To calve before 1st December 2026.

Class C219: Ayrshire Heifer. In milk.

Class C220: Ayrshire Cow. In milk, with second lactation.

Class C221: Ayrshire Cow. In milk, with third or subsequent lactation.

Class C222: Ayrshire Production Inspection Class, for an officially milk recorded pedigree Ayrshire cow.

*Particulars of milk and butterfat records must be furnished by the exhibitor, either by a Certificate of Milk Records, Cow Record Page and/or card or other official statement (M.R.S.) showing lactation period for each animal entered.*

*These details must be lodged with the Chief Dairy Cattle Steward not later than 11.00am Sunday 30th August. Exhibitors must produce the correct certificate or page for lactation of not more than 305 days otherwise entry will be disqualified. See p23 for judging information.*

## **Class C223: Ayrshire Championship**

This championship is kindly sponsored by Mr D Heasman

**The 1st and 2nd prize winners from classes C216 - C221 will be eligible for this championship.**

**Prizes: 1st - £50, The Champion Ayrshire will be presented with the Tester Bros Challenge Cup (T52). The best Ayrshire heifer will be presented with the A H Gribble Cup (T70) 2nd - £30**

# South Eastern Holstein Dairy Calf Show

Judge: Owain Harries, Carmarthenshire  
2pm, Sunday 30th August 2026

## CALF CLASSES

Each entrant into these classes must be a fully paid-up member of the Holstein Young Breeders Club. New members are always welcome!

Registration certificates MUST be brought to the Show and will be checked by the stewards. It is the responsibility of the co-ordinator to ensure that all calves are correctly identified against their registration certificates. Any calf unsatisfactorily identified at the Show will not be allowed to participate. Red & White Holstein calves are eligible to enter these classes.

Entry fee: Members £5, Non-Members £8

Prizes: 1st - £20, 2nd - £15, 3rd - £10

This section has been kindly sponsored by J D Trunkfield Farms Ltd

Class C226: SE Holstein Calf - Born between 1st April 2026 and 31st May 2026

Class C227: SE Holstein Calf - Born between 1st February 2026 and 31st March 2026

Class C228: SE Holstein Calf - Born between 1st December 2025 and 28th February 2026

Class C229: SE Holstein Calf - Born between 1st October 2025 and 30th November 2025

Class C230: SE Holstein Calf - Born between 1st August 2025 and 30th September 2025

Class C231: SE Holstein Calf - Born between 1st June 2025 and 31st July 2025

Class C232: SE Holstein Calf - Born between 1st April 2025 and 31st May 2025

### **Class C233: South Eastern Holstein Champion Red & White Calf**

**The highest placed Red & White calves from classes C226 - C232 will be eligible for this championship. The Champion will qualify for the ABAB Calf Show.**

### **Class C234: South Eastern Holstein Champion Calf**

**1st and 2nd prize winners from classes C226 - C232 will be eligible for this championship. The Sproutes Perpetual Challenge Cup (T132) will be awarded to the Champion Holstein Calf.**

## SHOWMANSHIP CLASSES

This section has been kindly sponsored by the S E Holstein Breeders Club  
**FREE ENTRY** for this section thanks to the kind sponsorship of Designer  
Holsteins.

*Animals being used for entries into the showmanship classes must be of an age that would make them eligible to enter the preceeding calf show within this section.*

*Novice & Junior Handler Classes - Handlers must be able to lead an animal of an appropriate size without assistance. An adult may be present in the ring during the class but must not provide assistance. Minimum handler age of 4.*

Class C237: SE Holstein Calf - Novice Handler

Class C238: SE Holstein Calf - Junior Handler to be 12 years of age or under on 1st January 2026. **The HCC Francis Challenge Cup (T131) will be awarded to the winning Junior Handler in this class.**

Class C239: SE Holstein Calf - Intermediate Handler aged between 13 & 15 years on 1st January 2026.

Class C240: SE Holstein Calf - Senior Handler aged between 16 & 20 years on 1st January 2026.

Class C241: SE Holstein Calf - Mature Handler aged between 21 & 26 years on 1st January 2026.

**Class C242: South Eastern Holstein Calf - Champion Handler**

**1st and 2nd prize winners from classes C237 - C241 will be eligible for this championship. The Semex Challenge Trophy (T133) will be awarded to the Champion Handler. The Alec Steele Trophy (T137) will be awarded to the best young breeder.**

We allocate passes which are valid for Showground entry from Saturday to Monday. Buy extra wristbands (£40 each) when making your entries online. You do not need to buy passes for children - they will be given a wristband by the section Chief Steward on arrival.

### PASS ALLOCATION:

Animals Entered	1 - 4	5 - 6	7 +
Pass Allocation	2	3	4

# Holstein

Judge: Owain Harries, Carmarthenshire  
Monday 31st August 2026

Entry fee: Members £11, Non-Members £18

Prizes: 1st - £40, 2nd - £30, 3rd - £20

**This section has been kindly sponsored by Mr & Mrs A Murison**

Class C245: Holstein Bulling Heifer. Aged under 21 months. Not in calf.

Class C246: Holstein Heifer. In calf with first calf. Not to be more than 3 years old on the day of the Show.

Class C247: Holstein Cow. In calf not less than 5 months.

Class C248: Holstein Heifer. In milk. Born on or after 1 January 2023.

Class C249: Holstein Cow. In her second lactation who calved her last calf under the age of 4 and a half years.

Class C250: Holstein Cow. In milk with third lactation.

Class C251: Holstein Senior Cow. In milk with fourth or subsequent lactation.

Class C252: Best Holstein Pair

Any age, owned and bred by a member of the S.E. Holstein Club.

**The Allan Brookes Trophy (T129) will be awarded to the winner of this class**

Class C253: Holstein Production Inspection Class, for an officially milk recorded pedigree Holstein cow.

*Particulars of milk and butterfat records must be furnished by the exhibitor, either by a Certificate of Milk Records, Cow Record Page and/or card or other official statement (M.R.S.) showing lactation period for each animal entered. These details must be lodged with the Chief Dairy Cattle Steward not later than 11.00am Sunday 30th August. Exhibitors must produce the correct certificate or page for lactation of not more than 305 days otherwise entry will be disqualified. See p23 for judging information.*

**Class C254: Holstein Championship**

**The 1st and 2nd prize winners from classes C245 - C251 will be eligible for this championship.**

**This championship is kindly sponsored by Salcombe Dairy**

**Prizes: 1st - £50, 2nd - £30**

**The Champion Holstein will be presented with the D H Honour and Sons Challenge Cup (T62). The cup will be held for one year and to be retained must be won three consecutive times by the same exhibitor. The William Knight Trophy (T138) will be awarded to the best exhibitor-bred cow from classes C245 - C251.**

# Jersey

Judge: Arwyn Wilson, Carmarthenshire  
Monday 31st August 2026

Entry fee: Members £11, Non-Members £18

Prizes: 1st - £40, 2nd - £30, 3rd - £20

Class C257: Jersey Bulling Heifer. Aged under 21 months. Not in calf.

Class C258: Jersey Heifer. To calve her first calf under the age of 2 and a half years.

Class C259: Jersey Cow. In calf, any age.

Class C260: Jersey Heifer. In milk, to have calved her first calf under the age of 2 and a half years

Class C261: Jersey Cow. In her second lactation who calved her last calf under the age of 4 and a half years.

Class C262: Jersey Cow. In milk with third lactation or subsequent lactation.

Class C263: Jersey Production Inspection Class, for an officially milk recorded pedigree Jersey cow.

*Particulars of milk and butterfat records must be furnished by the exhibitor, either by a Certificate of Milk Records, Cow Record Page and/or card or other official statement (M.R.S.) showing lactation period for each animal entered. These details must be lodged with the Chief Dairy Cattle Steward not later than 11.00am Sunday 30th August. Exhibitors must produce the correct certificate or page for lactation of not more than 305 days otherwise entry will be disqualified. See p23 for judging information.*

## **Class C264: Jersey Championship**

**The 1st and 2nd prize winners from classes C257 - C262 will be eligible for this championship.**

**Prizes: 1st - £50, 2nd - £30**

**The Jersey Champion will be awarded with the Cullum Challenge Cup (T56), kindly presented by Mr and Mrs M H D McAlpine. The Jersey Cattle Society offers a special rosette and prize card to the best cow or heifer registered in the Jersey Herd Book and bred by an exhibitor who is a member of the Jersey Cattle Society.**

## The Salcombe Dairy Show Team Award

Judge: Tory Lugsden, Suffolk

There is no entry fee for this class.

**\*NEW FIRST PRIZE\*:**

**£500 worth of Salcombe Dairy ice cream!**

1st - £50, 2nd - £25, 3rd - £15, 4th - £10

### CLASS C305

Judged in the cattle lines. Judging criteria covers such aspects as presentation and welfare of cattle, cleanliness of line, marketing and promotion of herd and staff associated with each herd.



#### REMEMBER TO BOOK YOUR STALLS!

Each cattle stall is £11 - you must book and pay for all the stalls you need at the time of making your entry.

Stalls and camping passes are items for purchase in the 'Competing' area of our website.

*Just visit [www.edenbridge-show.co.uk](http://www.edenbridge-show.co.uk) to see the class listings and make your entry. Don't forget to buy your membership to qualify for great discounts on class fees.*

# Any Other Dairy Breed Calf Show

Judge: Arwyn Wilson, Carmarthenshire  
2pm, Sunday 30th August 2026

Entry fee: Members £5, Non-Members £8.00

Prizes: 1st - £20, 2nd - £15, 3rd - £10

## CALF CLASSES

Registration certificates **MUST** be brought to the Show and will be checked by the stewards. It is the responsibility of the co-ordinator to ensure that all calves are correctly identified against their registration certificates. Any calf unsatisfactorily identified at the Show will not be allowed to participate.

Class C267: Any Other Dairy Breed Calf - Born on or after 1st February 2026

Class C268: Any Other Dairy Breed Calf - Born between 1st December 2025 and 31st January 2026

Class C269: Any Other Dairy Breed Calf - Born between 1st October 2025 and 30th November 2025

Class C270: Any Other Dairy Breed Calf - Born between 1st August 2025 and 30th September 2025

Class C271: Any Other Dairy Breed Calf - Born between 1st June 2025 and 31st July 2025

Class C272: Any Other Dairy Breed Calf - Born between 1st April 2025 and 31st May 2025

### **Class C273: Champion Any Other Breed of Dairy Calf**

**The 1st and 2nd prize winners from classes C267 - C272 will be eligible for this championship.**

**Prizes: 1st - The SEGBA Salver (T130) will be awarded to the highest placed Guernsey Calf.**

## SHOWMANSHIP CLASSES

*Animals being used for entries into the showmanship classes must be of an age that would make them eligible to enter the preceeding calf show within this section.*

*Junior Handler Classes - Handlers must be able to lead an animal of an appropriate size without assistance. An adult may be present in the ring during the class but must not provide assistance.*

Class C276: Any Other Dairy Breed - Junior Handler  
12 years of age or under on 1st January 2026 (min age 4).

Class C277: Any Other Dairy Breed - Intermediate Handler aged between 13 & 15 years on 1st January 2026.

*continues over...*

Class C278: Any Other Dairy Breed - Senior Handler aged between 16 & 20 years on 1st January 2026.

Class C279: Any Other Dairy Breed - Mature Handler aged between 21 & 26 years on 1st January 2026.

**Class C280: Any Other Dairy Breed - Champion Handler**

**1st and 2nd prize winners from classes C276 - C279 will be eligible for this championship.**

## *Any Other Dairy Breed*

Judge: Arwyn Wilson, Carmarthenshire  
Monday 31st August 2026

Entry fee: Members £11, Non-Members £18

Prizes: 1st - £40, 2nd - £30, 3rd - £20

Class C283: Any Other Dairy Breed Bulling Heifer, aged under 21 months. Not in calf.

Class C284: Any Other Dairy Breed Heifer. In calf, with first calf. To calve before 1st December 2026

Class C285: Any Other Dairy Breed Cow. In calf. To calve before 1st December 2026

Class C286: Any Other Dairy Breed Heifer. In milk.

Class C287: Any Other Dairy Breed Cow. In milk.

Class C288: Any Other Dairy Breed Production Inspection Class  
For an officially milk recorded pedigree cow.

*Particulars of milk and butterfat records must be furnished by the exhibitor, either by a Certificate of Milk Records, Cow Record Page and/or card or other official statement (M.R.S.) showing lactation period for each animal entered.*

*These details must be lodged with the Chief Dairy Cattle Steward not later than 11.00am Sunday 30th August. Exhibitors must produce the correct certificate or page for lactation of not more than 305 days otherwise entry will be disqualified. See p23 for judging information.*

**Class C289: Any Other Dairy Breed Championship**

Kindly sponsored by Mr D Heasman

**The 1st and 2nd prize winners from classes C283 - C287 will be eligible for this championship.**

**Prizes: 1st - £50, 2nd - £30**

**The highest placed Guernsey Cow will be presented with the Prince Littler Trophy (T144)**

## *Dairy Groups & Sweepstakes*

Judge: Duncan Hunter, Hertfordshire  
Monday 31st August 2026

Class C292: Group of Three Dairy Animals (All three to be owned by the exhibitor). Entries into this class can be made on the day of competition.

Entry fee of £13

Prizes: 1st - £35, 2nd £15, 3rd - £10

The Eaton-Williams Salver (T63) will be awarded to the winner of this class.

Class C293: Dairy Heifer Sweepstake

Open to heifers of any dairy breed. Must have been entered into another breed class at the Show. Entry fee of £5 to be taken on the day.

### Prizes

1st - 40% of entry fees

2nd - 30% of entry fees

3rd - 20% of entry fees

4th - 10% of entry fees

### THE DAN YOUNG PERPETUAL CHALLENGE CUP (T78)

Presented by Douglas Benson, this cup will be awarded to yeoman or tenant farmers for the largest number of points gained in the cattle classes. NB - a yeoman or tenant farmer is a person who derives their living solely from the land. The same beast may not take more than one prize to count for the Cup.

Points: 1st - 8 points, 2nd - 4 points, 3rd - 2 points.

In the case of two or more exhibitors gaining the same number of points, the animals concerned will be judged as a group by a judge appointed by the Committee on the day of the Show and their decision shall be final.

# CATTLE CHAMPIONSHIPS

## **Class C296: Best Pair of Any One Breed of Beef Cattle at the Show, owned by a single exhibitor**

Prizes: 1st - £70, 2nd - £30

The Champion will be presented with The Edenbridge Business House Coronation Challenge Cup (T58)

Judge: Brian Wills, Kinross

## **Class C297: Supreme Champion Junior (Beef Cattle)**

Prizes: 1st - £70, 2nd £30

Judge: Brian Wills, Kinross

## **Class C298: The Warners Solicitors Supreme Champion Beef Female**

Prizes: 1st - £70, 2nd £30

The Champion will be presented with The H B Brandy Challenge Cup (T99)

Judge: Brian Wills, Kinross

## **Class C299: The Warners Solicitors Supreme Champion Beef Male**

Prizes: 1st - £70, 2nd - £30

The Champion will be presented with the Jack Bowthorpe Challenge Cup (T77)

Judge: Brian Wills, Kinross

## **Class C300: The Warners Solicitors Supreme Pedigree Beef Champion**

Prizes: 1st - £300, 2nd - £200

The Champion will be presented with The Owen Trophy (T88)

Judge: Brian Wills, Kinross

## **Class C301: Supreme Champion Dairy Female of the Show**

Kindly sponsored by The Downing Partnership

Prizes: 1st - £300, 2nd - £200

The champion will be presented with the Blockfield Perpetual Challenge Salver (T59)

Judge: Duncan Hunter, Hertfordshire

## **Class C302: Best Pair of Dairy Females**

Kindly sponsored by The Old Edenbridge Farners Discussion Group - Est 1945

Prizes: 1st - £70, 2nd - £30

The Blockfield Perpetual Challenge Cup (T113) will be awarded to the best pair of dairy females.

Judge: Duncan Hunter, Hertfordshire

**Class C303: Best Dairy Female Bred by an Exhibitor for Three or More Generations**

Prizes: 1st - £70, 2nd - £30

The Shaveswood Perpetual Challenge Salver (T115) will be awarded to the Champion.

Judge: Duncan Hunter, Hertfordshire

**Class C304: The Production Inspection Championship**

The winners of classes C222, C253, C263 & C288 will be eligible for this championship.

Prizes: 1st - £70, 2nd - £30

The Bapton Perpetual Challenge Cup (T97) will be awarded to the Milk Production Inspection Champion

Judge: Duncan Hunter, Hertfordshire

**Class C305: Supreme Dairy Young Handler Championship**

Kindly sponsored by Mr D Heasman

To commence after the final calf class has been judged. The Champion and Reserve Champion Handler from each breed are eligible for this championship.

Prizes: 1st - £50, 2nd - £40, 3rd - £10

The Pylon Perpetual Challenge Cup (T146) will be awarded to the Supreme Champion Handler.

**Class C309: Supreme Dairy Calf Championship**

Kindly sponsored by Mr D Heasman

To commence after the final calf class has been judged. The Champions and Reserve Champions from the dairy calf sections are eligible for this championship.

Prizes: 1st - £50, 2nd - £30

**GRAND PARADE OF LIVESTOCK & PRESENTATION  
OF CATTLE CHAMPIONSHIPS**

*Main Ring - 2.30pm on Monday*

# Discounts for Members

Membership of our show is a great way to show your ongoing support and to stay up to date with all our news. Membership comes with various benefits for added value, including access to the Members' Marquee area at the show each year.

Affordability is key, with membership starting at just £66 per year. This brings our members exclusive discounts on entry fees and grants entry to the show for both days.

We issue newsletters for members to keep you in touch with our developments through the year.

Enjoy a drink from the Members' bar, linger over a delicious two-course lunch or grab a lighter bite to eat whilst watching all the action in the Main Ring.

## Could you become a sponsor?

You might have noticed that some of our competition classes have a sponsor who kindly contributes to the prize fund. Sponsors can be individuals or companies. We can offer a package of benefits to help you get the most from your support.

We acknowledge sponsors in our prize schedules (printed and online) and we can tailor a great sponsorship package to suit you that can increase your visibility with our competitors and visitors.

For more information and an informal chat about the opportunities for sponsorship then please call or email our Show Office.

Contact: Judy Whittaker, Show Director, on 01342 832307 or email: [showdirector@edenbridge-show.co.uk](mailto:showdirector@edenbridge-show.co.uk)



*Keep up with our news and join the conversation on our social media feeds. Search @EdenbridgeOxstedShow*

# General Regulations

1. Entries for cattle, sheep & pigs may be made online at [www.edenbridge-show.co.uk](http://www.edenbridge-show.co.uk) or on a printed entry form and must be delivered or sent to the Show Office, with the entry fee on or before the close of entries.
2. All exhibitors are required to hold appropriate public liability insurance for their livestock and to produce evidence of this on request.
3. Exhibitors must declare where relevant if they are part of accredited health schemes.
4. All cattle, goat and pig entries must have been the bona fide property of the Exhibitor at least three calendar months before the show day, and at least one calendar month for sheep entries.
5. Definition of Exhibitor Bred: An animal is defined as "Exhibitor Bred" if it is born in the UK or Republic of Ireland and carries the owner's prefix. This includes animals born as a result of embryo transplant. An animal in joint ownership qualifies as Exhibitor Bred providing it has been jointly entered and one of the joint owners is the breeder.
6. It is the Exhibitor's responsibility to ensure that they comply with eligibility requirements for each class and that the information supplied on the class entry is accurate. Every Exhibitor shall prove the correctness of their entry to the satisfaction of the Committee when called upon to do so, or failing to furnish the required proof, may be prohibited from exhibiting, and any prize awarded may be withheld and the award cancelled.
7. Entry fees will be forfeited if the animal does not come forward for their class without a valid reason. A refund will be considered if the animal is medically unable to compete. A refund request will need to be completed, in writing, within 1 month of the date of the show. A vet's certificate must be supplied with the refund request. Refunds will only be considered after the show.
8. Should it become necessary to cancel any livestock classes owing to DEFRA/APHA regulations, the whole of the entrance fee paid by the Exhibitors of these classes will be refunded.
9. In all classes the Committee reserves the right of rejection of the entry of any person and also the right

of withholding any prize or prizes awarded.

10. The Committee reserves the right to restrict the number of entries in any class and to split or merge classes as the Chief Steward of the section deems fit.

11. To be eligible to make entries at Members' rates an Exhibitor must have paid the annual subscription for the current year, 2026. Members must have paid their membership prior to making their entry to ensure that they are eligible for Members' rates.

12. Prize money will be paid electronically into the entrant's nominated bank account after the event.

The Show Office will make every effort to make such payments within 30 days of the show. Entrants should take care to ensure they enter the correct information on the entry form. All queries and claims regarding prize money must be submitted before 10th October 2026.

13. Exhibitors in all classes must ensure they have sufficient stockmen in attendance, especially if multiple entries are made. Stockmen in charge of animals must be subject to the orders of the Stewards and must be in attendance during the whole period of the Show. Handlers must be a minimum age of 4 years or over.

14. Exhibitors and their associated party must have the correct, valid wristbands in order to access the Showground. Additional wristbands may be purchased from the Shop section of the website at: [www.edenbridge-show.co.uk](http://www.edenbridge-show.co.uk)

15. Pass Allocation per section

Animals Entered	1 – 4	5 – 6	7 +
Pass Allocation	2	3	4

Commercial Sheep - 2 passes if no pedigree sheep are also entered

Children 15 and under do not need an allocated or chargeable wristband if attending with a livestock exhibitor. Children will be given a wristband by the Chief Steward of their section on arrival. All competitors must wear a valid wristband throughout.

16. For livestock exhibitors wishing to camp, a camping/caravan permit can be purchased when making entries or at a later date. A camping pass will be needed for a tent, motorhome or caravan that will take up additional space in the Livestock Car

# General Regulations (continued)

Park. Passes can be purchased for £20 (first pass, then a further maximum of two at £30 each) and are valid for staying on site between 29th & 31st August 2026. There is no electric hook-up offered. Special arrangements exist for schools and official Young Farmer groups. Please contact the Show Office to discuss.

## 17. Penning Fees

Cattle	Sheep	Pigs	Goats
£11	£6	£6	£15

18. Straw will be provided for the first bedding only. Livestock are housed in marquees.

19. Penning fees will be refunded if an animal is medically unable to compete, providing the Exhibitor notifies the Show Office no less than 48 hours before the date of the Show.

20. Animals may arrive during Saturday 29th August 2026 (between 8.00am and 6.00pm) and must remain on the showground for the duration of the Show. No animal to be removed from its place in the Showground before 5.00pm on Monday 31st August 2026 without a written permit from the Show Office or the Chief Steward of their related section.

21. If any animal shall be proved to be suffering from any contagious or infectious disease at the time it is sent to the Show, the Exhibitor thereof shall indemnify the Society against all or any claims for losses sustained.

22. Animals must be shown according to their breed society and breed association standards and rules. All pedigree animals competing as such must be registered with the appropriate breed society.

23. All Exhibitors are reminded to report the movement of livestock off their farm and then back onto their farm after the show.

24. It is the Exhibitor's responsibility to ensure that all current legislation is met with regards to showing any livestock. If in doubt, please contact Surrey Trading Standards (Tel: 0300 123 2329) <https://www.surreycc.gov.uk/business-and-consumers/trading-standards/business-advice/animal-health>

25. The following practices are not permitted for the purpose of the preparation of an animal for presentation at the Show:

\* The infusion or injection of any drugs or any other substance or the insertion of any object into the teats, udder, blood vessels, muscles or under the skin of any animal or otherwise into an animal to restrict the flow of milk.

\* The setting of the teats of an animal with any form of glue or other setting substance or any other action which alters the natural teat placement of an animal.

\* The sealing of an animal's teats with any form of glue or other substance which prevents a cow reducing pressure on her udder through natural leakage.

\* Any surgery to the mammary system of an animal at any time during the life of the animal which is designed to alter its physical attributes, except the removal of supernumerary teats.

\* Performing surgery of any kind to change the natural contour or appearance of the animal's body, hide or hair. (Not included is the removal of warts and horns, clipping and dressing of hair and trimming of hooves).

\* Roping udders and the use of objects to improve definition of the suspensory centre ligament physically or balancing the udder by any means other than by leaving naturally produced milk in any or all quarters.

\* Filling an animal's rumen unnaturally with liquid (tubing).

26. All animals receiving a prize, reserve or commended rosette will be required (under penalty of disqualification) to be ready to parade when required.

27. Trophies presented at the Show to be held for one year.

28. No one will be allowed in the ring while the judges are engaged upon their awards, except those who have duties to perform.

29. The judges may withhold any prize where there is evident want of merit. No second prize will be awarded unless there are at least three entries in a class and two individual exhibitors, and no third prize unless there are at least five entries.

30. Any class may be cancelled or, where appropriate, amalgamated unless there are at least three entries.

31. A class is deemed to have commenced when an

# General Regulations (continued)

animal enters the ring, if the judge is then present in the ring. If the judge is not present then the class shall commence when the judge enters the ring.

32. Judges have been appointed to act as such in events as indicated in the competition schedule. The Committee reserves the right to appoint substitutes for any who may be unavoidably prevented from attending and all entries are accepted upon that understanding.

33. It is the responsibility of the exhibitor to note the name of the judge appointed for the classes they wish to enter and are advised, in the interests of all concerned, not knowingly to enter an animal bred by, previously owned by or with any connections to the judge appointed.

34. The decision of the judge is final.

35. All objections must be made in writing to the Show Office within one hour of the termination of the judging of the class(es) in question on the day of the Show; such objection to be accompanied by a deposit of £5.00, this deposit to be forfeited in the event of the objection proving unfounded and/or frivolous.

36. Data given upon entry of any classes to Edenbridge & Oxted Agricultural Show will be retained and used to provide you with reasonable information about your participation and about the event in general. It may also be provided to various and relevant societies for checking eligibility, for publication of results and may be published in the Show's catalogue, social media and website. By providing data you are giving permission for that data to be stored on the Show's systems and databases. The Show's Privacy Notice can be found on our website at [www.edenbridge-show.co.uk](http://www.edenbridge-show.co.uk). By entering a competition class you permit the Show Organisers to use your name and photographs of you and your exhibit in our publicity material. This could be online, in print and could be supplied to third party media organisations for publication.

37. In the event of an Exhibitor, or anyone connected with an Exhibitor, being guilty of improper or abusive behaviour towards their animal, any official of the society or the general public, then the Chairman, Chief Steward or Show Director shall have the power

to order the offender to leave the showground and recommend that the Council shall refuse that person's entries for future shows. Should an Exhibitor be aggrieved at such action they may lodge an objection in writing for consideration after the show. Such objections shall be considered by a panel of not less than 3 members of the Society appointed by the Chairman or Vice-Chairman and their decision shall be final.

38. All of the Stewards and Committees are volunteers who dedicate their time to organising and running the Edenbridge & Oxted Agricultural Show. We kindly ask that you respect them during the event.

39. The Organisers of this show have taken reasonable precautions to ensure the health and safety of everyone present. For these measures to be effective, everyone must take all reasonable precautions to avoid and prevent accidents occurring and must obey the instructions of the Organisers and all the Officials and Stewards.

40. Neither the Society nor its officers or servants shall be liable for personal injury or loss of or damage to any property whatsoever happening to or arising out of the presence of any person at the Society's Show and caused by the wrongful act or omission of the Society, its officers or servants, and it is a condition of entry to the Show that any person visiting the Show, including any Exhibitors, competitors or their servants shall indemnify the Society, its officers or servants against all liabilities, claims, proceedings, costs and demands arising out of such act or omission. The Show requires all exhibitors and competitors to hold third party liability insurance for the duration of the event.

41. The Event Safety Officer will be assisted by the Show's stewards, security and medical staff. The Show will implement any legislative requirements and make every effort to follow best practice advice both during the build-up and operation of the Show. The exhibitor assumes responsibility for ensuring that their exhibits and activities comply with all legal requirements as may be in place at the time of the event to protect the safety of exhibitors and public alike.

42. Force majeure: Whilst every effort will be made

# General Regulations (continued)

to ensure the event takes place as planned, if natural disaster, extreme weather, act of God, war, act or threat of terror, civil commotion, fire, disease or death of a monarch should prevent the show from running or substantially curtail its activities the show shall not be liable for any losses incurred and reserves the right to refuse refund of fees.

43. Failure to comply with any of the foregoing regulations could result in prize money being withheld, possible disqualification and refusal of entries in future years.

44. Should any questions arise not provided for in the foregoing rules and regulations, the same must be referred to the Committee, whose decision shall be final.

## Specific to Cattle

45. Cattle exhibitors will be eligible to receive a £20 transport levy for each animal forward over 12 months of age. Age determined at the date of the Show. The transport levy will be paid together with any prize money within 1 month after the show to the bank account nominated on the entry.

46. All cattle exhibitors are reminded that the passport must be brought to the Showground in respect of every animal along with pre-movement information if travelling from a TB1 area.

## Specific to Sheep

47. Each exhibitor is restricted to 4 pens per breed including a kit pen. This pen restriction is to ensure that all exhibitors and breeds are given a chance to show at the event. It is recommended that sheep are housed with a maximum of two sheep per pen, due to the possibility of heat stress in very hot weather

48. All sheep entered by an exhibitor into a Best Pair or Group of Three class must be the property of the same exhibitor and must have been entered into previous breed classes in their section.

49. Sheep Exhibitors will note that all females of all breeds except Dorset Horn, Polled Dorset and Finnish Landrace to be exhibited are: 1) non-pregnant; 2) have not lambed within 30 days prior to attending the show; 3) not subject to procedures which change the

seasonal breeding pattern.

50. All females of Dorset Horn, Polled Dorset and Finnish Landrace breeds must be accompanied by a declaration stating that each animal is 1) non-pregnant; 2) has not lambed in the previous 30 days.

51. All sheep, regardless of age or breed, must be ear tagged with the flock mark or herd mark prior to movement to the show. Sheep exhibitors are reminded to complete their AML1 forms for sheep movements coming onto and leaving the Showground, plus MV Certificates if applicable.

52. The colouring of sheep wool will NOT be permitted on the Showground. The fleece must be dry upon arrival.

53. No provisions have been made for scrapie-monitored sheep. Individuals who choose to attend do so at their own risk.

## Specific to Pigs

54. All pigs coming to the show must be accompanied by an eAML2 form. Inbound and Outbound. NOTE: Electronic Movement Licensing - eAML2 combine AML2 and FCI forms into one.

55. All pigs must be registered with their respective breed society.

56. Exhibitors must display a copy of the pig's registration certificate on the pen to verify pedigree registration and ownership.

57. All pigs must be correctly tagged and the information should match with the registration certificate displayed

58. No pigs under the age of 4 months will be entered. Piglets accompanying a sow must be at least 3 weeks of age and individually tagged.

59. Boars over 12 months of age must have tusks trimmed and be shown by 2 adult handlers (over 18 years) with proper boards and sticks/batons.

60. Handlers are required to be of smart appearance with appropriate footwear; white coats must be worn at all times in the show ring. Proper pig boards and sticks must be used. Pig boards should not show any form of individual advertising or herd names.

61. A competent person must be in attendance with each lot of pigs for the duration of the show and all

# General Regulations (continued)

attendants must comply with reasonable requests from the Stewards.

62. Boars over a year old must have sired a litter within 12 months prior to show.

## Specific to Goats

63. Goat entries may be made on a printed entry from which can be downloaded from the website. Goat entries should be emailed to the Chief Goat Steward, Rachel Fox, on [racheffoxuk2002@yahoo.co.uk](mailto:racheffoxuk2002@yahoo.co.uk) or alternatively mailed c/o BGS, PO Box 137, Swanley, Kent BR8 9BW. All goat exhibits must be registered with the British Goat Society as in the ownership and in the name of the Exhibitor, the registered name and number being quoted on the entry form, and also the kidding date for goats in milk. The registered number of any goat initially entered as RAF (Registration Applied For) must be submitted to the Chief Steward before that goat competes.

64. All goats in milk must have kidded or aborted a minimum of thirty (30) days prior to the show. No pregnant goat will be admitted to the showground.

65. The show is open to goats from herds that are whole herd negative CAE tested within the twelve months prior to the show. Whole herd negative CAE tested means an entire herd in which all animals over one year old hold a current negative CAE test certificate, and all kids should have a current negative CAE test certificate for their dams. The show will also be open to herds that are registered as CAE Accredited under the Premium Sheep and Goat Health Scheme (PSGHS) operated by SRUC (Scotland's Rural College, previously SAC). Exhibitors must ensure that they comply with the Scheme's rules and conditions whilst on the showground.

If any herds have had a positive CAE result, they must provide two clear whole herd tests, completed since the reactor has been culled. The tests must not be more than 12 months apart and not less than 6 months apart.

Exhibitors are advised that milk that has been through the communal weigh bucket should not be fed to kids, as this has been a factor in the spread of CAE

66. All goats in milk will be stripped out to the

satisfaction of stewards by 7pm on Saturday 29th August 2026.

## *Don't miss our Stockman's Tent entertainment!*

All Time Catering are warmly welcomed back to our Stockman's Restaurant with a delicious full English breakfast and full menu throughout each day for lunch and evening meal. They'll be cooking using locally sourced ingredients and quality local meat with food available from Saturday lunchtime.

The Stockman's bar will be open from Friday night for our exhibitors, trade stands, volunteers and members to come and enjoy a drink. It'll be fully stocked to include a great selection of amazing local ales.

Saturday and Sunday night at Stockman's are nothing short of legendary and our livestock exhibitors are warmly invited to join the party with live music to get everyone up on the dance floor for an unforgettable night of fun.

## LAND ROVER CRAWLEY

## RANGE ROVER

Choose Land Rover Crawley for sales and servicing. A modern luxury experience, thoughtfully designed around you. Combining capability, refinement, and expert care to support every journey, on and off the road.



## DEFENDER



CONTACT US

## DISCOVERY



Land Rover Crawley,  
Manor Royal, Crawley, RH10 9LW  
01293 404000  
southeastmotors.com



**Ewe wouldn't hesitate to care  
for your flock. Don't hesitate  
to care for yourself.**

If you notice any ongoing, unusual or  
unexplained changes in your health,  
talk to your GP and **nip it in the bud.**

**FCN** | THE FARMING  
COMMUNITY  
NETWORK

In partnership with

**MACMILLAN**  
CANCER SUPPORT



2026 Show Chairmen: John Downing & Holly Taylor  
2026 Show President: Helen Mahy CBE

ENTER ONLINE! [www.edenbridge-show.co.uk](http://www.edenbridge-show.co.uk)

Edenbridge & Oxted Show Office,  
The Old Dairy, Wintersell Farm,  
Dwelly Lane, Edenbridge, Kent TN8 6QD

T: 01342 832307

E: [info@edenbridge-show.co.uk](mailto:info@edenbridge-show.co.uk)

Registered charity no. 1102127  
Company limited by guarantee - incorporation no. 4682208